

Collier County Vulnerability Assessment

Public Meeting

January 8, 2025



Agenda

Agenda

1. **Introductions**
2. **Project Overview**
3. **Draft Report Overview**
4. **Vulnerability Assessment Results**
5. **Next Steps**



Introductions



Introductions

Role/Department/Agency

William Lang, FPEM, CFM, ANFI, Community Development

Christopher Mason, Community Planning and Resiliency

Howard Critchfield, Community Planning and Resiliency



Consultant Team

David Stroud, CFM

Abby Moore, AICP, CFM

Ranger Ruffins

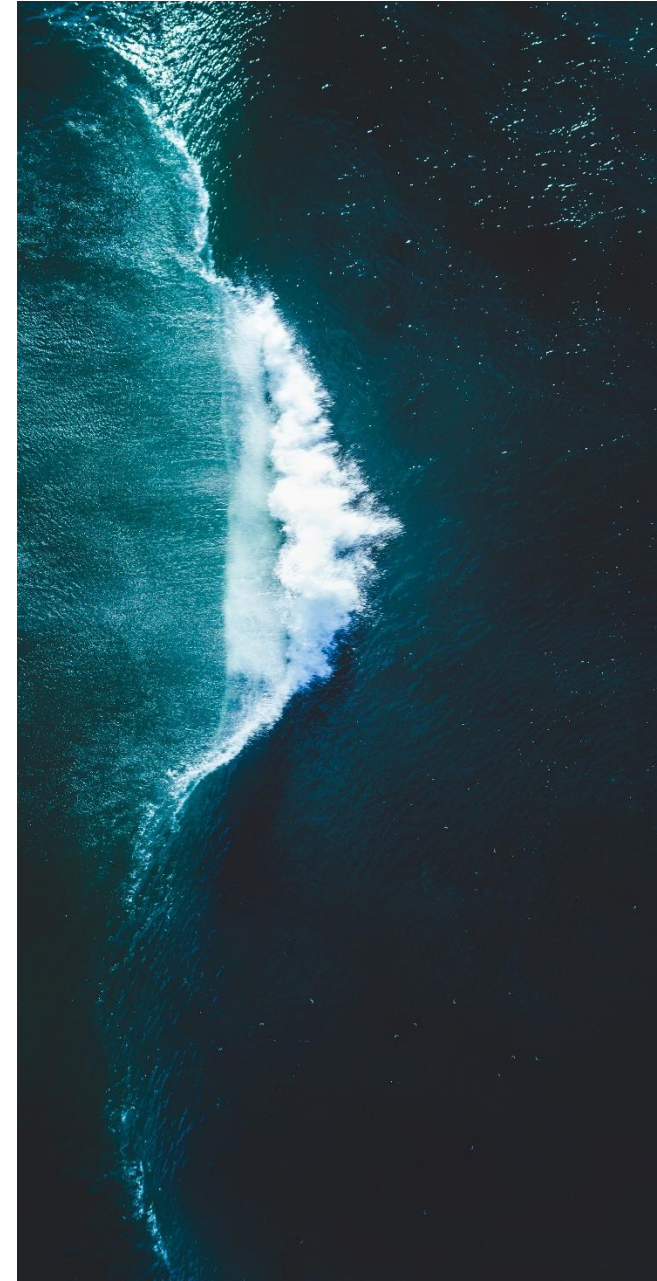


Project Overview



Resilient Florida Program

- 2021 Senate Bill 1954 was signed: *Statewide Flooding and Sea Level Rise Resilience*
 - Established the Resilient Florida Grant Program within the Department of Environmental Protection (DEP)
 - Requires DEP to complete statewide flood vulnerability and sea level rise data assessments
- The program creates a coordinated approach to building coastal and inland resilience
 - Seeks to protect inland waterways, coastlines, and shores
 - Prepares communities for the impacts of sea level rise, intensified storms and flooding

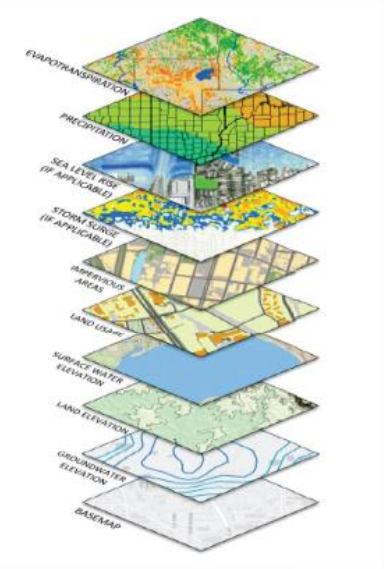


Scope

- Get organized and form the Steering Committee
 - Local Mitigation Strategy (LMS) Working Group/Committee
- Acquire background data on assets and flood hazard scenarios
- Conduct an exposure analysis
- Conduct a sensitivity analysis
- Draft a Vulnerability Assessment report
- Present the final draft report to the public
- Finalize Vulnerability Assessment report

*Must meet statute
S. 380.093, F.S. requirements
and DEP standardized scope*

Standardized Vulnerability Assessment: Scope of Work Guidance



Example Input Data Schematic for Flood Simulation Models (Esri, 2020; FDEP, 2017; HPRCC, 2022; Jean-Paul Rodrigue, 2015; NOAA, 2022; NOAA, 2018; USGS 2021; USGS, 2018)

Acknowledgements

This document was created by the Florida Department of Environmental Protection's (Department) Resilient Florida Program, within the Office of Resilience and Coastal Protection (ORCP) in partnership with the resilience team from Taylor Engineering, Inc. to act as a resource for local community efforts when assessing vulnerability through the Resilient Florida Program's planning grants. This document is up to date as of May 2022.

Draft Report Overview



Draft Report Overview

Vulnerability Assessment Report Overview

Section 1. Introduction

Section 2. Asset Inventory

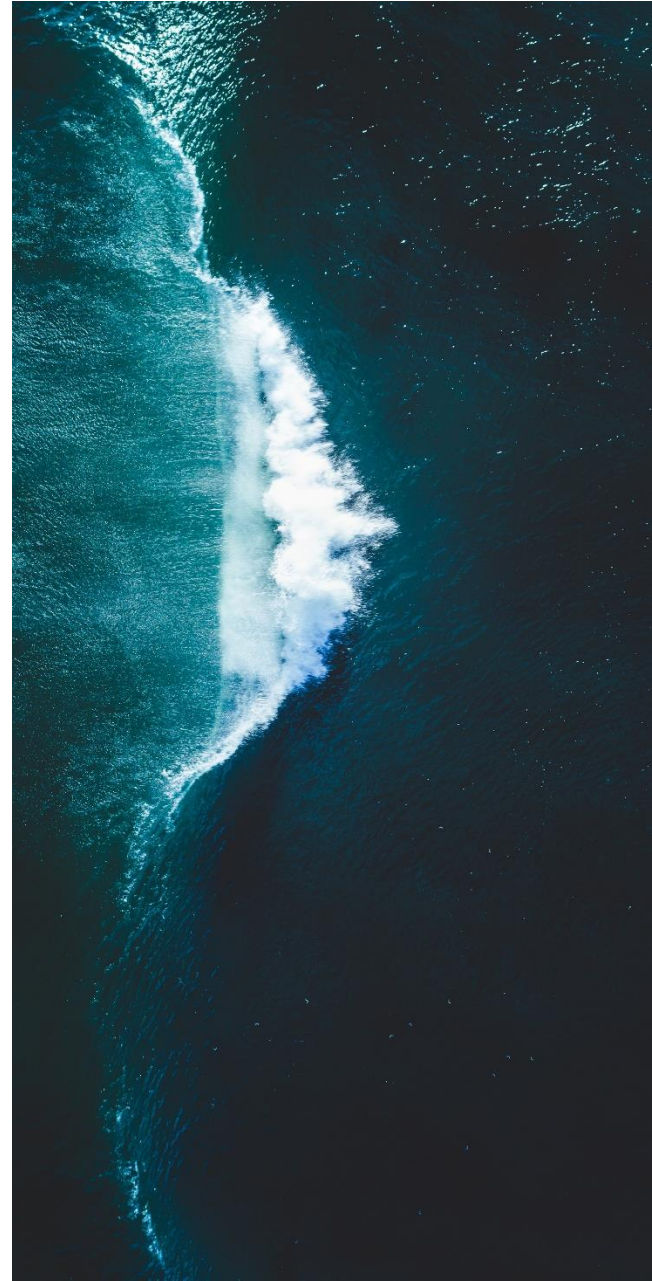
Section 3. Hazard Identification

Section 4. Vulnerability Assessment

Appendix A: Asset Inventory

Appendix B: Exposure Analysis

- Appendix B-1: Exposure Maps



Draft Report Overview

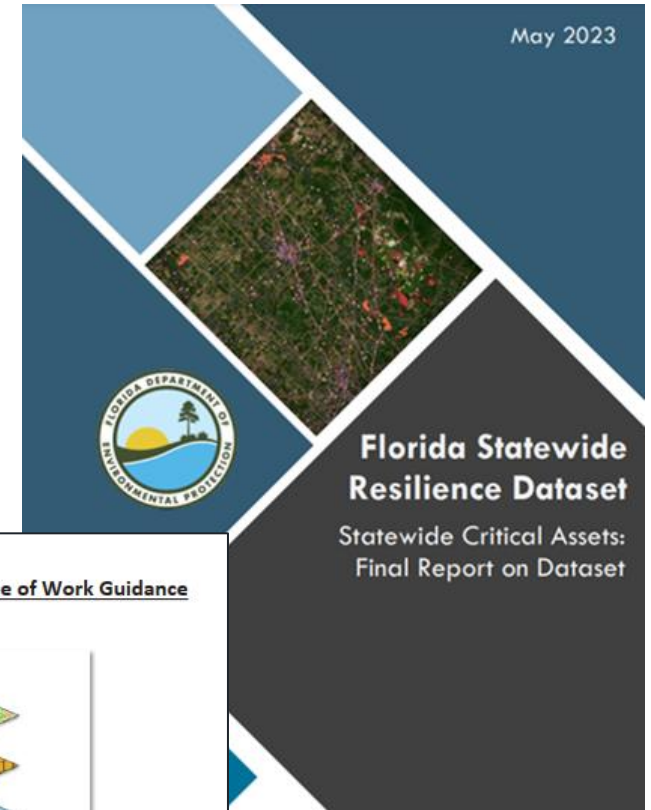
Section 1 Introduction

Background

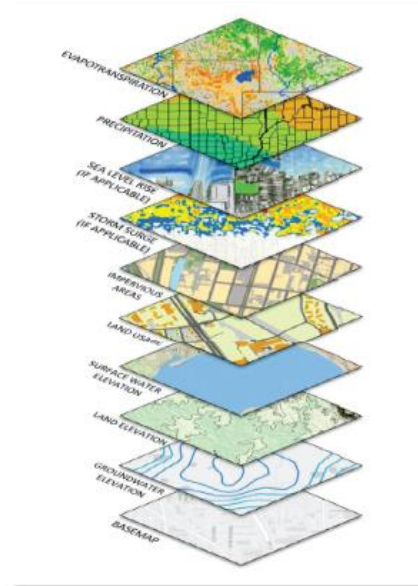
Project Objectives

Scope

Data Collection



Standardized Vulnerability Assessment: Scope of Work Guidance



Example Input Data Schematic for Flood Simulation Models (Esri, 2020; FDEP, 2017; HPRCC, 2022; Jean-Paul Rodrigue, 2015; NOAA, 2022; NOAA, 2018; USGS 2021; USGS, 2018)

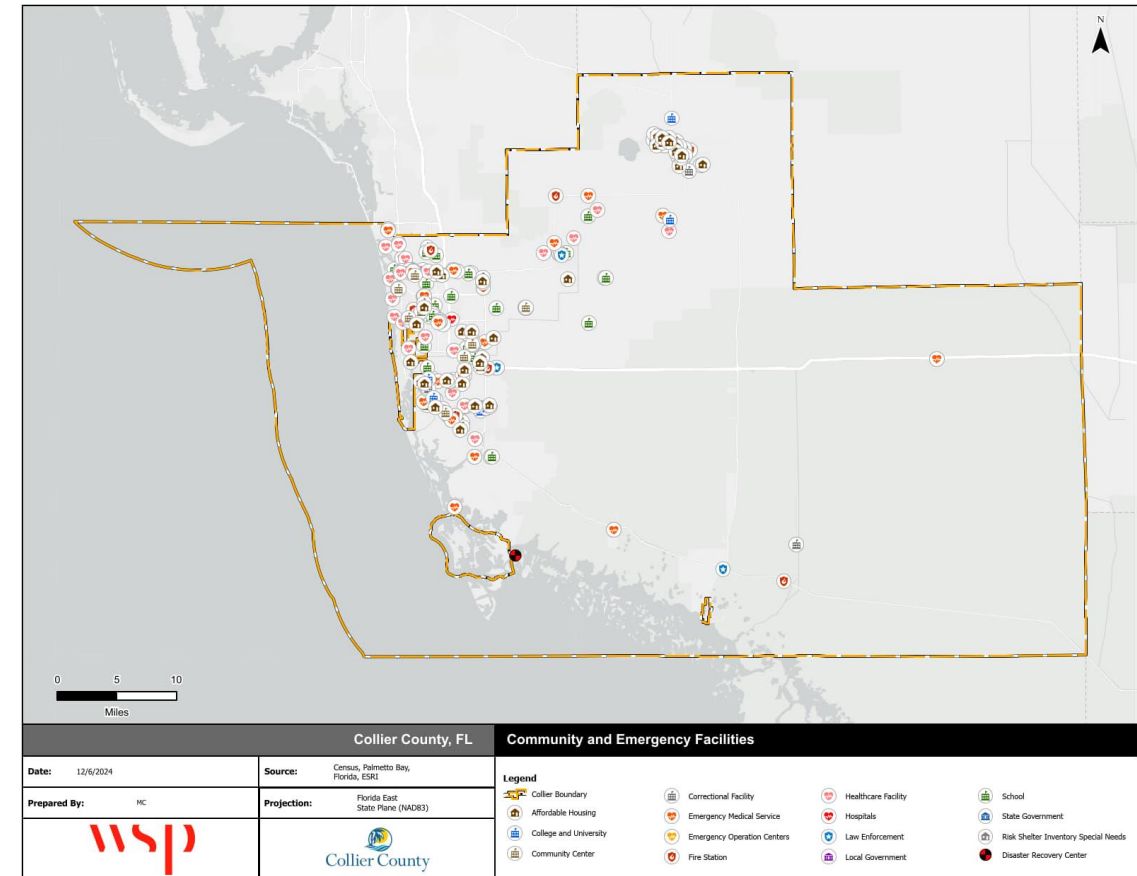
Section 2 Asset Inventory

Overview

- DEP Resilience Statewide Asset Inventory
- Local Asset Inventory (Unincorporated County)
- Regional Asset Inventory (Incorporated Areas)
- Broken down by 4 asset classes

Assets

- Critical Community & Emergency Facilities
- Critical Infrastructure
- Transportation & Evacuation Routes
- Natural, Cultural, & Historical



Includes maps and asset count summary for each asset group

Critical Assets

Asset Classes and Types required by the Resilient Florida Program (where applicable)

Asset Class	Asset Type
Transportation & Evacuation Routes	airports, bridges, bus terminals, ports, major roadways, marinas, rail facilities, and railroad bridges
Critical Infrastructure	wastewater treatment facilities and lift stations, stormwater treatment facilities and pump stations, drinking water facilities, solid and hazardous waste facilities, military installations, communications facilities, and disaster debris management sites
Critical Community & Emergency Facilities	schools, colleges, universities, community centers, correctional facilities, disaster recovery centers, emergency medical service facilities, emergency operation centers, fire stations, health care facilities, hospitals, law enforcement facilities, local government facilities, logistical staging areas, affordable public housing, risk shelter inventory, and state government facilities
Natural, Cultural, and Historical Resource	conservation lands, parks, shorelines, surface waters, wetlands, and historical and cultural assets

Critical Assets

Asset Inventory Process

Summary of Asset Inventory

Asset Class	Count
Critical Community & Emergency Facilities	260
Critical Infrastructure	24,338 (over 19,000 are manholes; 3,000 are stormwater ponds)
Transportation Assets	11,094 (over 10,000 are road segments)
Natural, Cultural, and Historical Resource	37,395 (over 27,000 are wetlands; over 6,000 are surface water flowlines)

Section 3 Hazard Identification

Overview

- Climate Change

Sea Level Rise

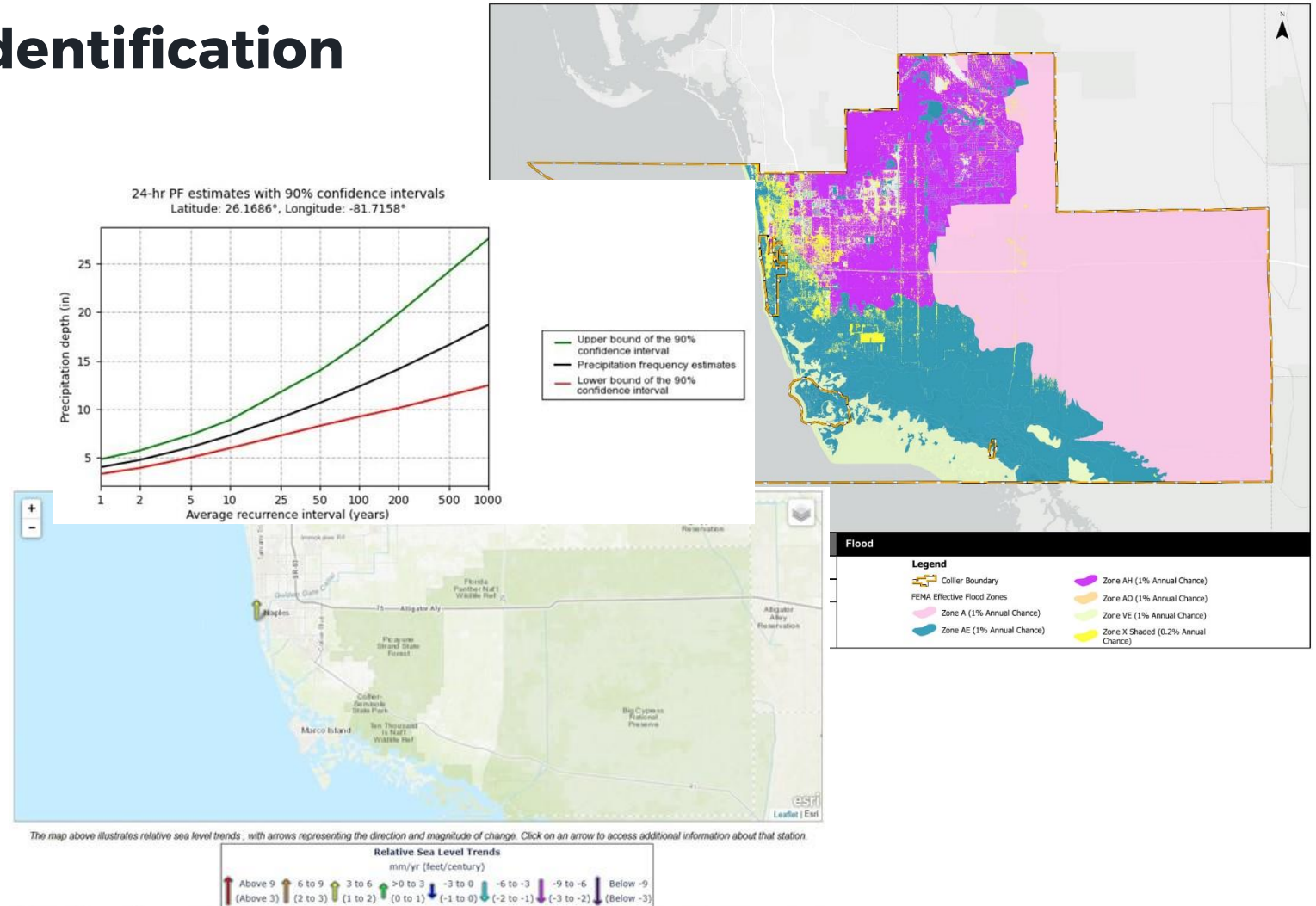
- High Tide Flooding

Rainfall-Induced Flooding

Storm Surge Flooding

Compound Flooding

- Stormwater Flooding



Overview of each hazard including a review of past occurrences, influences of climate change, and general impacts to the Collier County region

Section 4 Vulnerability Assessment

Overview

- Flood Scenarios (21)
 - Based on the identified hazards and time horizons
- Three planning horizons (present, 2040, 2070)

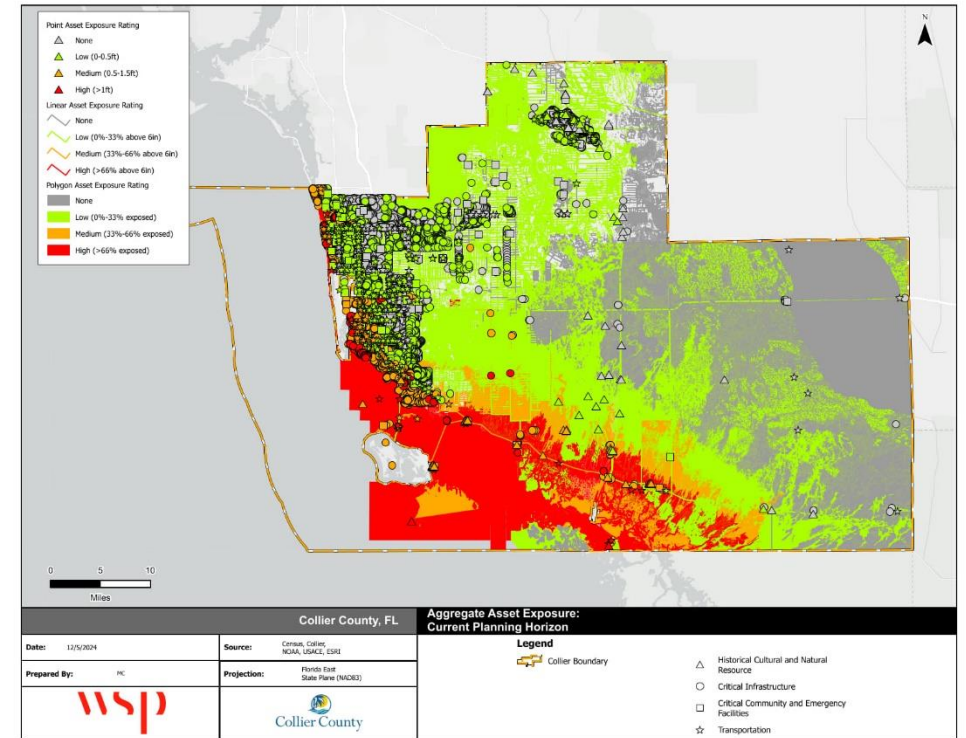
Presents the assessed flood scenarios across the three planning horizons. Includes maps detailing the various hazard extents

Exposure Analysis

Sensitivity Analysis

Risk Analysis

Each analysis subsection includes a brief overview, description of the methodology, and a results section with maps and/or tables



Asset	2070 Conditions							
	2070 SLR - Low	2070 SLR - High	SS/5yr/2070 SLR - Low	SS/5yr/2070 SLR - High	SS/100yr/2070 SLR - Low	SS/100yr/2070 SLR - High	SS/1,000yr/2070 SLR - Low	SS/1,000yr/2070 SLR - High
Whistlers Green	---	---	---	---	---	---	---	---
Windsong Club	---	---	---	---	---	---	---	---
Bear Creek - Naples	---	---	---	---	---	---	0.77	---
Belvedere Apartments	---	---	---	---	---	---	---	---
Laurel Ridge	---	---	---	---	---	---	1.14	---
Summer Lakes	---	---	---	---	---	---	---	---
Summer Lakes II	---	---	---	---	---	---	---	---
Allegro at Hacienda Lakes	---	---	---	---	---	---	---	---
Cadencia at Hacienda Lakes	---	---	---	---	---	---	---	---
Collier Housing Alternatives	---	---	---	---	---	---	---	---
Goodlette Arms	---	---	---	---	---	---	---	---
Harmony on Santa Barbara	---	---	---	---	---	---	---	---
Ospreys Landing	---	---	---	---	---	---	---	---
Villas Of Capri	---	---	---	---	---	---	---	---
Whistler's Cove	---	---	---	---	---	---	---	---
Wild Pines of Naples II	---	---	---	---	---	---	---	---
Independence Place Shadowlawn	---	---	---	---	---	---	---	---
Colleges and Universities								
Ave Maria University	---	---	---	---	---	---	---	---
Florida International University Chrp Outreach Center	---	---	---	---	---	---	---	---
Florida Southwest State College - Collier Campus	---	---	---	---	---	---	---	---
University Of Florida - Institute Of Food & Agri Sciences	---	---	---	---	---	---	---	---
Adult & Workforce Education School	---	---	---	---	---	---	---	---
Kaiser University Naples	---	---	---	---	---	---	---	---
Jersey College	---	---	---	---	---	---	---	---
Lorenzo Walker Technical College	---	---	---	---	---	---	---	---
Community Centers								
Veterans Community Park Community Center	---	---	---	---	---	---	---	---
Colden Gate Community Center	---	---	---	---	---	---	---	---
Immokalee Community Center	---	---	---	---	---	---	---	---
Colden Gate Aquatics Complex	---	---	---	---	---	---	---	---
Colden Gate Library	---	---	---	---	---	---	---	---
County of Collier - Immokalee Branch Library	---	---	---	---	---	---	---	---
NAPLES BRANCH OF HARRY CRAPIN	---	---	---	---	---	---	---	---

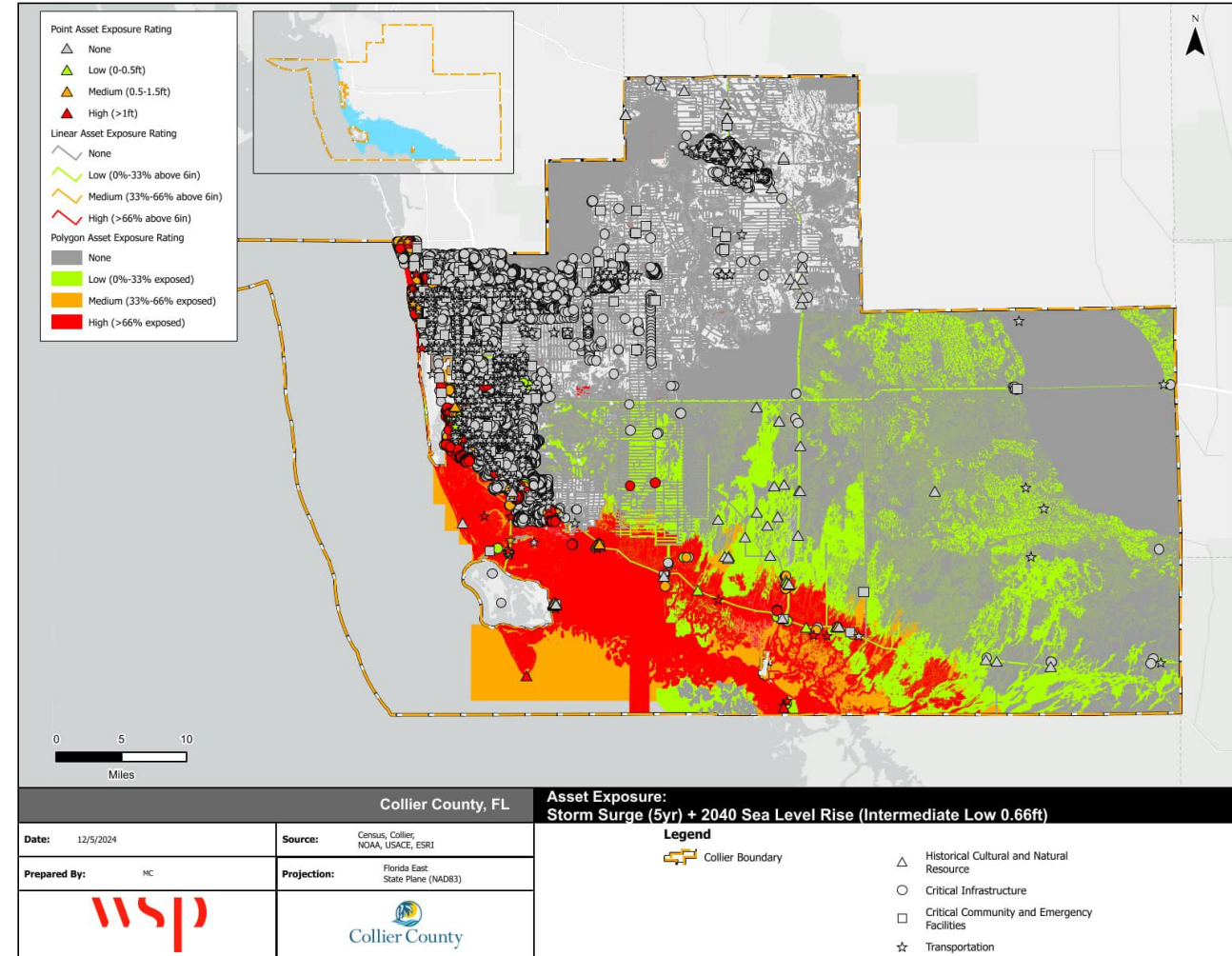
Appendix A & B

Appendix A – Asset Inventory

Tables with all assessed assets categorized by the four asset classes and asset types

Appendix B – Exposure Maps

Exposure analysis maps displaying the flood hazard extent and all of the assets categorized by exposure rating. One map for each of the 21 flood scenarios



Exposure Annex

Exposure Annex

Separate document with the full exposure results. Provides exposure results for each of the individual asset. One section for each planning horizon and tables organized based on asset geometry (point, line, polygon)

COLLIER COUNTY, FLORIDA

VULNERABILITY ASSESSMENT

EXPOSURE ANNEX

1.2 LINEAR FEATURES

Asset	Current Conditions				
	1% Flood	High Tide	SS/5yr	SS/100yr	SS/1,000yr
Critical Infrastructure					
Electric Transmission Lines					
Carnestown - Immokalee No. 4 100-161-AC, Overhead	45%	5%	7%	13%	17%
Andytown - Orange River 500-AC, Overhead	40%	0%	0%	0%	0%
Ave Maria South - Immokalee No. 4 100-161-AC, Overhead	65%	0%	0%	0%	0%
Everglades City - Carnestown Not Available-Overhead	100%	86%	96%	100%	100%
Capri - Rattlesnake 100-161-AC, Overhead	53%	0%	3%	48%	78%
Marco - Belle Meade 100-161-AC, Overhead	100%	87%	84%	100%	100%
Belle Meade - Tap153226 100-161-AC, Overhead	87%	15%	52%	87%	100%
Belle Meade - Capri 100-161-AC, Overhead	100%	0%	77%	100%	100%
Weber - Orangetree 220-287-AC, Overhead	24%	0%	0%	0%	0%
Tap141796 - Orangetree 220-287-AC, Overhead	55%	0%	0%	0%	0%
Golden Gate - Weber 220-287-AC, Overhead	20%	0%	0%	0%	0%
Immokalee No. 4 - Tap172423 100-161-AC, Overhead	53%	0%	0%	0%	0%
Tap154083 - Tap172423 100-161-AC, Overhead	24%	0%	0%	0%	0%
Unknown172422 - Tap172423 100-161-AC, Overhead	0%	0%	0%	0%	0%
Vanderbilt - Collier 220-287-AC, Overhead	42%	0%	0%	0%	45%
Tap141796 - Livingston 220-287-AC, Overhead	34%	0%	0%	0%	32%
Tap141852 - Terry 100-161-AC, Overhead	4%	0%	0%	0%	6%
Tap141853 - Collier 100-161-AC, Overhead	34%	0%	0%	0%	51%
Riser141851 - Bonita Springs 100-161-AC, Overhead	40%	1%	2%	31%	54%
Collier - Corkscrew 220-287-AC, Overhead	30%	0%	0%	0%	33%
Vanderbilt - Terry 220-287-AC, Overhead	12%	0%	0%	0%	0%
Golden Gate - Rattlesnake 100-161-AC, Overhead	32%	0%	0%	0%	1%
Collier - Golden Gate 100-161-AC, Overhead	14%	0%	0%	1%	38%
Collier - Golden Gate 100-161-AC, Overhead	31%	0%	0%	0%	42%
Pine Ridge - Solana 100-161-AC, Overhead	12%	0%	0%	0%	50%
Riser141850 - Tap141853 100-161-AC, Overhead	20%	0%	0%	0%	67%
Collier - Livingston 220-287-AC, Overhead	39%	0%	0%	0%	100%
Collier - Tap153226 100-161-AC, Overhead	65%	1%	1%	29%	93%
Collier - Alligator 100-161-AC, Overhead	8%	1%	1%	39%	99%
Collier - Naples 100-161-AC, Overhead	21%	0%	0%	0%	89%
Solana - Tap152015 100-161-AC, Overhead	3%	0%	0%	2%	99%
Collier - Tap152015 100-161-AC, Overhead	30%	0%	0%	0%	93%
Riser141850 - Riser141851 100-161-AC, Underground	32%	0%	0%	0%	83%
Alligator - Tap153226 100-161-AC, Overhead	50%	0%	0%	0%	100%

Vulnerability Assessment Results



Hazard Identification

Rainfall-Induced Flooding

- 1%-annual-chance flood (100yr flood depth)
- Data:
 - FEMA FIRM data

High Tide

- Mean higher high water (MHHW)
 - High tide flooding at 1.74ft above MHHW
- Data:
 - NOAA High Tide Flooding Data

Storm Surge

- 5yr, 100yr, 1,000yr
- Data:
 - Data: South Atlantic Coastal Study (SACS), USACE

Sea Level Rise

- Intermediate low and intermediate high
- Data:
 - 2017 NOAA intermediate-low and intermediate-high projections
 - **NOTE:** Required to use 2017 data based on State requirements. Use of 2022 data required larger grant scope changes
 - 2017 and 2022 projections are very similar

Compound Flooding

- Sea level rise: intermediate low and intermediate high
- Storm surge: 5yr, 100yr, 1,000yr

There are 21 total
flood scenarios

Assessed Flood Hazard Scenarios

Current Conditions

- 1%-annual-chance flood
- High Tide
- Storm Surge
 - 5yr, 100yr, and 1,000yr

Future Conditions (2040 & 2070)

- Sea Level Rise (SLR)*
 - Intermediate Low
 - Intermediate High
- Storm Surge & Sea Level Rise*
 - Storm Surge, 5yr, SLR Low
 - Storm Surge, 5yr, SLR High
 - Storm Surge, 100yr, SLR Low
 - Storm Surge, 100yr, SLR High
 - Storm Surge, 1,000yr, SLR Low
 - Storm Surge, 1,000yr, SLR High

*Evaluated for each of the time horizons

Components of the Vulnerability Assessment

Exposure: The depth of water caused by flooding

- Flood depth (ft) at each asset

Sensitivity: Impact of flooding on assets

- Number of assets impacted

Risk: Severity of flood on each asset type

- Percentage of impacted assets by asset type

Evaluated for each asset and each flood scenario

Exposure	
Low	≤½ ft
Medium	½ ft – 1 ½ ft
High	> 1 ½ ft

Note: Analysis for point features

Risk Assessment	
None	0%
Low	≤25%
Medium	25 – 50%
High	50 – 75%
Extreme	>75%

Exposure – Current Conditions

Depth of flooding for each assessed scenario

Example: Affordable Housing

Asset Name	Current Conditions				
	1%-Annual Chance	High Tide	SS/5yr	SS/100yr	SS/1,000yr
Whistler's Green	--	--	--	--	--
Windsong Club	--	--	--	--	--
Bear Creek - Naples	--	--	--	--	--
Belvedere Apartments	0.25	--	--	0.53	3.87
Laurel Ridge	--	--	--	--	--
Summer Lakes	--	--	--	--	--
Summer Lakes II	--	--	--	--	--
Allegro at Hacienda Lakes	1.21	--	--	--	--
Cadenza at Hacienda Lakes	1.02	--	--	--	--
Collier Housing Alternatives	--	--	--	--	2.48
Goodlette Arms	2.71	--	--	2.63	5.86
Harmony on Santa Barbara	--	--	--	--	--
Ospreys Landing	0.41	--	--	--	2.49
Villas Of Capri	--	--	--	--	--
Whistler's Cove	--	--	--	--	2.29
Wild Pines of Naples II	1.29	--	--	2.15	5.49

Exposure – 2070 Conditions

Depth of flooding for each assessed scenario

Example: Affordable Housing

Asset Name	2070 Conditions							
	2070 SLR - Low	2070 SLR - High	SS/5yr/2070 SLR - Low	SS/5yr/2070 SLR - High	SS/100yr/2070 SLR - Low	SS/100yr/2070 SLR - High	SS/1,000yr/2070 SLR - Low	SS/1,000yr/2070 SLR - High
Whistler's Green	--	--	--	--	--	--	--	1.75
Windsong Club	--	--	--	--	--	--	--	2.02
Bear Creek - Naples	--	--	--	--	--	--	0.71	2.77
Belvedere Apartments	--	--	--	--	1.78	3.84	5.12	7.18
Laurel Ridge	--	--	--	--	--	0.50	1.14	3.20
Summer Lakes	--	--	--	--	--	--	--	0.79
Summer Lakes II	--	--	--	--	--	--	--	--
Allegro at Hacienda Lakes	--	--	--	--	--	2.23	2.48	4.54
Cadenza at Hacienda Lakes	--	--	--	--	--	1.94	2.19	4.25
Collier Housing Alternatives	--	--	--	--	0.81	2.87	3.73	5.79
Goodlette Arms	--	--	--	1.09	3.88	5.94	7.11	9.17
Harmony on Santa Barbara	--	--	--	--	--	--	--	0.22
Ospreys Landing	--	--	--	--	--	2.91	3.74	5.80
Villas Of Capri	--	--	--	--	--	--	--	1.28
Whistler's Cove	--	--	--	--	0.94	3.00	3.54	5.60
Wild Pines of Naples II	--	--	--	0.48	3.40	5.46	6.74	8.80

Aggregate Exposure Maps

Aggregate exposure maps help us visualize where highly exposed assets are located in the County

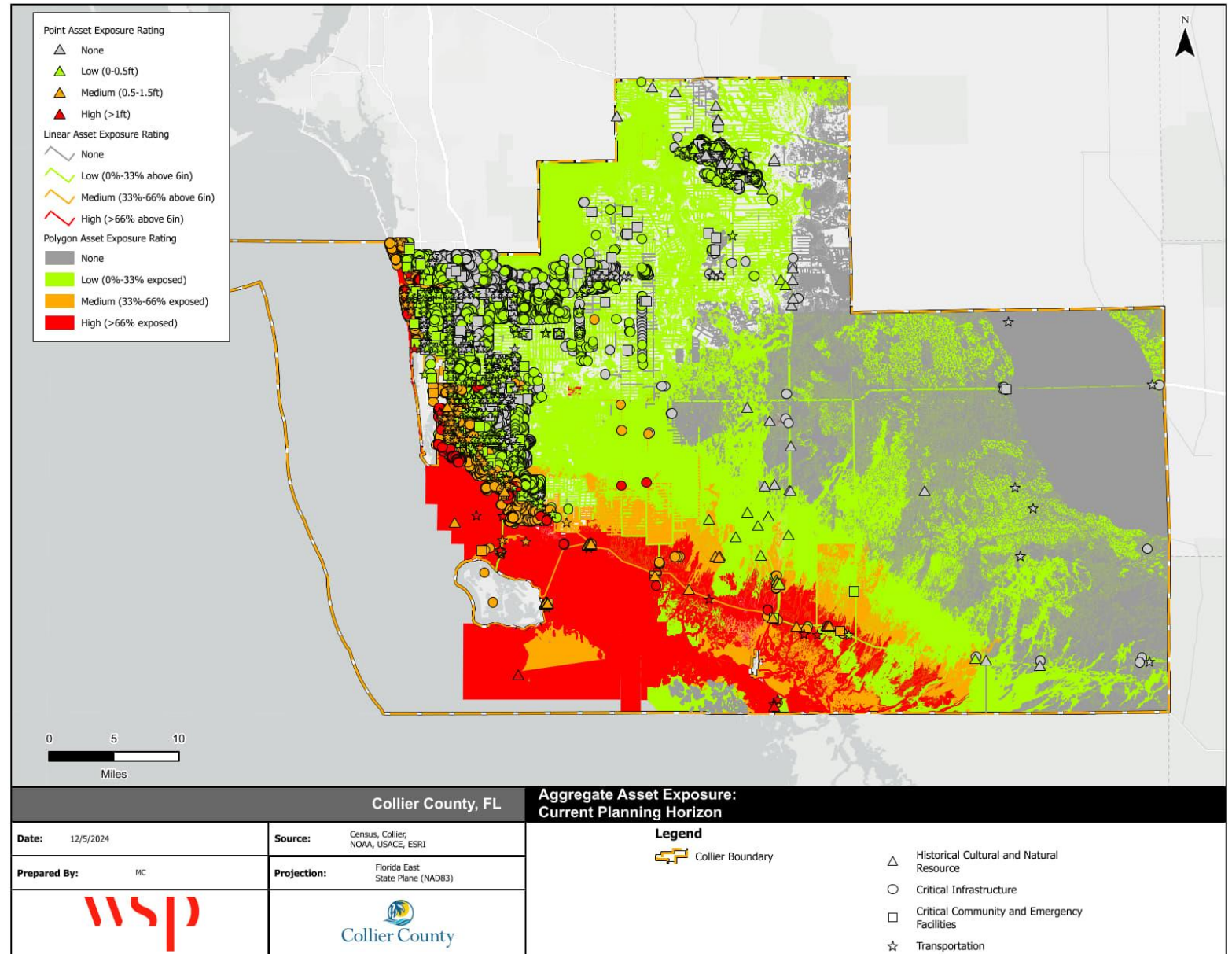
- Based on exposure ratings for each asset and each flood scenario
 - 0 points if the asset is not exposed
 - 1 point for low exposure rating
 - 2 points for medium exposure rating
 - 3 points for high exposure rating

Aggregate Exposure Rating

Aggregate Exposure Rating	
None	0 points
Low	8 points or less
Medium	8 – 12 points
High	12 or more points

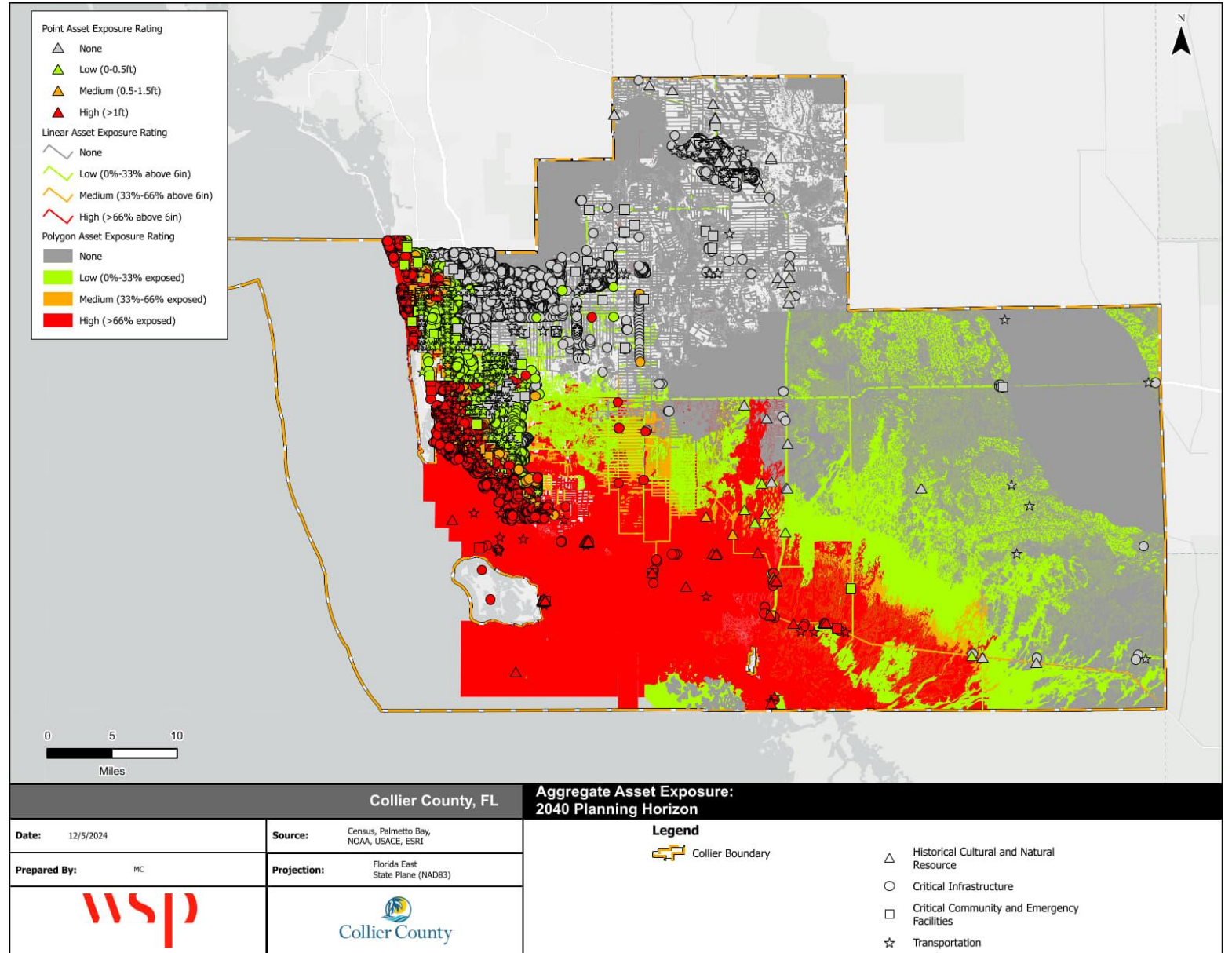
Vulnerability Assessment Results

Current Conditions



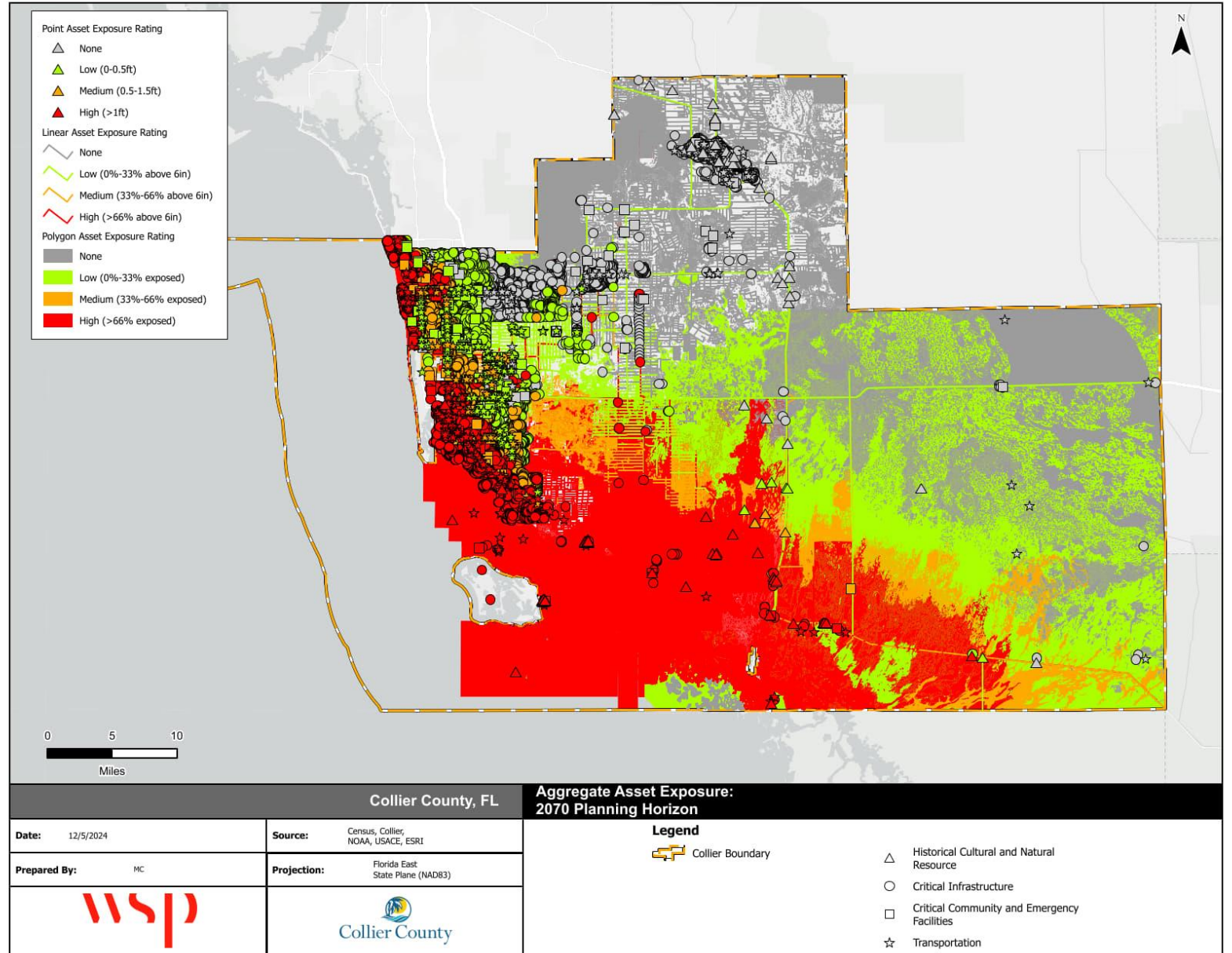
Vulnerability Assessment Results

2040 Conditions



Vulnerability Assessment Results

2070 Conditions



Sensitivity – Current Conditions

Severity of flooding – number of assets impacted by each flood scenario

Example: Critical Community and Emergency Facilities

Asset Type	Total Asset Count	Current Conditions				
		1%-Annual Chance	High Tide	SS/5yr	SS/100yr	SS/1,000yr
Affordable Housing	46	11	0	0	4	7
Colleges and Universities	8	2	0	0	2	2
Community Centers	12	1	0	0	1	3
Correctional Facilities	4	3	0	0	2	3
Disaster Recovery Centers	3	2	0	0	1	1
Emergency Medical Facilities	31	5	0	0	6	12
Emergency Operation Centers	1	0	0	0	0	0
Fire Stations	26	6	0	0	8	13
Healthcare Facilities	47	5	0	0	6	28
Hospitals	5	0	0	0	1	3
Law Enforcement Facilities	8	2	0	0	2	3
Local Facilities	1	1	0	0	1	1
Risk Shelters – Special Needs	1	0	0	0	0	0
Schools	66	13	0	0	12	19
State Facilities	1	0	0	0	0	0

Sensitivity - 2070 Conditions

Severity of flooding - number of assets impacted by each flood scenario

Example: Critical Community and Emergency Facilities

Asset Type	Total Asset Count	2070 Conditions							
		2070 SLR - Low	2070 SLR - High	SS/5yr/2070 SLR - Low	SS/5yr/2070 SLR - High	SS/100yr/2070 SLR - Low	SS/100yr/2070 SLR - High	SS/1,000yr/2070 SLR - Low	SS/1,000yr/2070 SLR - High
Affordable Housing	46	0	0	0	3	6	10	13	21
Colleges and Universities	8	0	0	0	2	2	3	3	3
Community Centers	12	0	0	0	0	2	3	5	9
Correctional Facilities	4	0	0	0	2	3	3	3	3
Disaster Recovery Centers	3	0	0	0	1	1	1	1	1
Emergency Medical Facilities	31	0	0	1	3	8	12	13	18
Emergency Operation Centers	1	0	0	0	0	0	0	0	0
Fire Stations	26	0	1	2	4	9	13	14	15
Healthcare Facilities	47	0	0	0	1	20	28	37	42
Hospitals	5	0	0	0	0	2	3	3	4
Law Enforcement Facilities	8	0	0	0	1	2	2	3	4
Local Facilities	1	0	0	0	1	1	1	1	1
Risk Shelters - Special Needs	1	0	0	0	0	0	0	0	0
Schools	66	0	0	0	10	17	26	28	38
State Facilities	1	0	0	0	3	6	10	13	21

Risk – Current Conditions

Level of risk is based on the percentage of assets impacted for each asset type

Example: Critical Community and Emergency Facilities

Asset Type	Total Asset Count	Current Conditions				
		1%-Annual Chance	High Tide	SS/5yr	SS/100yr	SS/1,000yr
Affordable Housing	46	24%	0%	0%	9%	15%
Colleges and Universities	8	25%	0%	0%	25%	25%
Community Centers	12	8%	0%	0%	8%	25%
Correctional Facilities	4	75%	0%	0%	50%	75%
Disaster Recovery Centers	3	67%	0%	0%	33%	33%
Emergency Medical Facilities	31	16%	0%	0%	19%	39%
Emergency Operation Centers	1	0%	0%	0%	0%	0%
Fire Stations	26	23%	0%	0%	31%	50%
Healthcare Facilities	47	11%	0%	0%	13%	60%
Hospitals	5	0%	0%	0%	20%	60%
Law Enforcement Facilities	8	25%	0%	0%	25%	38%
Local Facilities	1	100%	0%	0%	100%	100%
Risk Shelters – Special Needs	1	0%	0%	0%	0%	0%
Schools	66	20%	0%	0%	18%	29%
State Facilities	1	0%	0%	0%	0%	0%

Risk – 2040 Conditions

Level of risk is based on the percentage of assets impacted for each asset type

Example: Critical Community and Emergency Facilities

Asset Type	Total Asset Count	2040 Conditions							
		2040 SLR - Low	2040 SLR - High	SS/5yr/2040 SLR - Low	SS/5yr/2040 SLR - High	SS/100yr/2040 SLR - Low	SS/100yr/2040 SLR - High	SS/1,000yr/2040 SLR - Low	SS/1,000yr/2040 SLR - High
Affordable Housing	46	0%	0%	0%	0%	13%	13%	22%	28%
Colleges and Universities	8	0%	0%	0%	0%	25%	25%	25%	38%
Community Centers	12	0%	0%	0%	0%	17%	17%	42%	50%
Correctional Facilities	4	0%	0%	0%	0%	50%	75%	75%	75%
Disaster Recovery Centers	3	0%	0%	0%	0%	33%	33%	33%	33%
Emergency Medical Facilities	31	0%	0%	0%	3%	26%	26%	42%	45%
Emergency Operation Centers	1	0%	0%	0%	0%	0%	0%	0%	0%
Fire Stations	26	0%	0%	0%	8%	35%	35%	54%	54%
Healthcare Facilities	47	0%	0%	0%	0%	30%	47%	66%	79%
Hospitals	5	0%	0%	0%	0%	40%	40%	60%	60%
Law Enforcement Facilities	8	0%	0%	0%	0%	25%	25%	38%	38%
Local Facilities	1	0%	0%	0%	0%	100%	100%	100%	100%
Risk Shelters – Special Needs	1	0%	0%	0%	0%	0%	0%	0%	0%
Schools	66	0%	0%	0%	0%	23%	26%	39%	44%
State Facilities	1	0%	0%	0%	0%	0%	0%	0%	0%

Risk – 2070 Conditions

Level of risk is based on the percentage of assets impacted for each asset type

Example: Critical Community and Emergency Facilities

Asset Type	Total Asset Count	2070 Conditions							
		2070 SLR - Low	2070 SLR - High	SS/5yr/2070 SLR - Low	SS/5yr/2070 SLR - High	SS/100yr/2070 SLR - Low	SS/100yr/2070 SLR - High	SS/1,000yr/2070 SLR - Low	SS/1,000yr/2070 SLR - High
Affordable Housing	46	0%	0%	0%	7%	13%	22%	28%	46%
Colleges and Universities	8	0%	0%	0%	25%	25%	38%	38%	38%
Community Centers	12	0%	0%	0%	0%	17%	25%	42%	75%
Correctional Facilities	4	0%	0%	0%	50%	75%	75%	75%	75%
Disaster Recovery Centers	3	0%	0%	0%	33%	33%	33%	33%	33%
Emergency Medical Facilities	31	0%	0%	3%	10%	26%	39%	42%	58%
Emergency Operation Centers	1	0%	0%	0%	0%	0%	0%	0%	0%
Fire Stations	26	0%	4%	8%	15%	35%	50%	54%	58%
Healthcare Facilities	47	0%	0%	0%	2%	43%	60%	79%	89%
Hospitals	5	0%	0%	0%	0%	40%	60%	60%	80%
Law Enforcement Facilities	8	0%	0%	0%	13%	25%	25%	38%	50%
Local Facilities	1	0%	0%	0%	100%	100%	100%	100%	100%
Risk Shelters – Special Needs	1	0%	0%	0%	0%	0%	0%	0%	0%
Schools	66	0%	0%	0%	15%	26%	39%	42%	58%
State Facilities	1	0%	0%	0%	0%	0%	0%	0%	0%

Next Steps

Next Steps

- Finalize report
 - Include additional comments from the VA Steering Committee (1/17/25)





Questions?



wsp.com