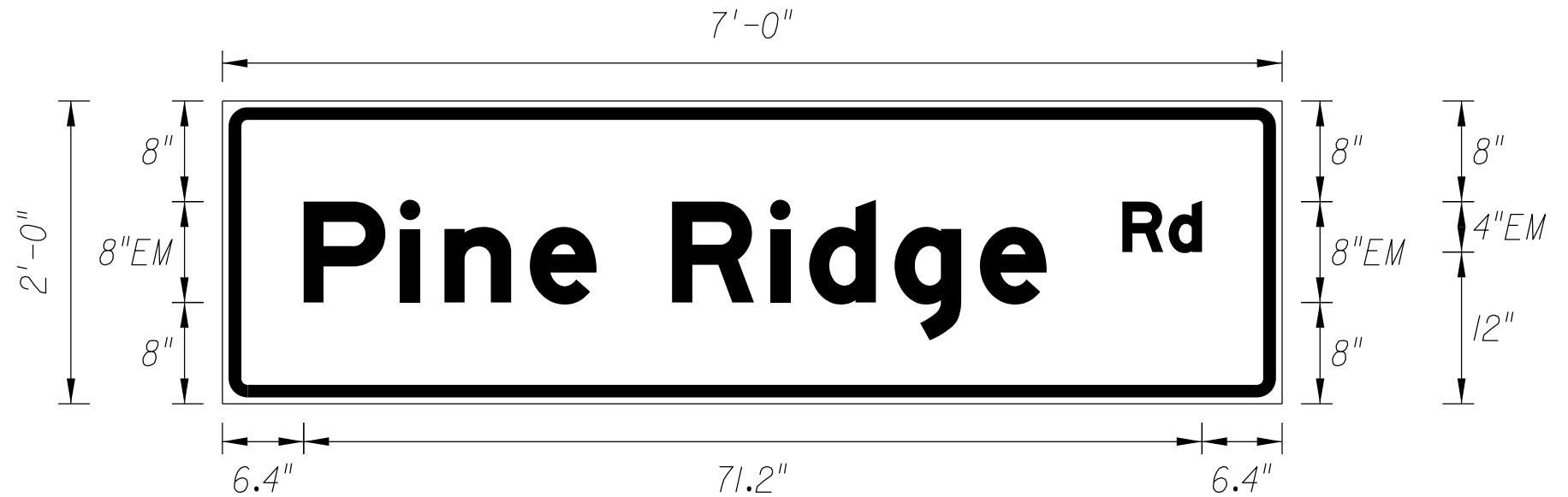



1. INTERNALLY ILLUMINATED STREET NAME SIGNS SHALL BE L.E.D. MEETING SECTION 700 OF THE FLORIDA DEPARTMENT OF TRANSPORTATION, STANDARD SPECIFICATIONS FOR ROAD AND BRIDGE CONSTRUCTION.
2. UTILIZE THE FOLLOWING TEXT ATTRIBUTES IN DESCENDING ORDER OF PREFERENCE:
10-INCH UPPER CASE WITH 8-INCH LOWER CASE, TYPE EM FONT
10-INCH UPPER CASE WITH 8-INCH LOWER CASE, TYPE E FONT
8-INCH UPPER CASE WITH 6-INCH LOWER CASE, TYPE EM FONT
8-INCH UPPER CASE WITH 6-INCH LOWER CASE, TYPE E FONT
THE STREET TYPE SHALL BE HALF HEIGHT, RAISED.
3. INTERNALLY ILLUMINATED STREET NAME SIGNS SHALL BE 24" HEIGHT FOR A SINGLE OR DOUBLE STREET NAME. INTERNALLY ILLUMINATED STREET NAME SIGN WIDTH SHALL BE IN 1 FOOT INCREMENTS TO A MAXIMUM OF 9 FEET.
4. INTERNALLY ILLUMINATED STREET NAME SIGNS SHALL BE CANTILEVER MOUNTED AT SPAN WIRE SIGNALIZED INTERSECTIONS.
5. SWING MOUNT INTERNALLY ILLUMINATED STREET NAME SIGNS SHALL BE DOUBLE SIDED (2-WAY).
6. ALL MOUNTING HARDWARE SHALL BE STAINLESS STEEL.
7. INTERNALLY ILLUMINATED SIGNS SHALL INCLUDE TERMINAL COMPARTMENT FOR TERMINATION OF SIGNAL CABLE IN THE SIGN ASSEMBLY.
8. TWO BRACKETS SHALL BE FURNISHED FOR EACH STREET NAME SIGN WITH A WIDTH EQUAL TO OR GREATER THAN 48 INCHES.
9. SIGN BRACKET SHALL BE MANUFACTURED BY PELCO PRODUCTS INC., OR APPROVED EQUIVALENT.
10. INTERNALLY ILLUMINATED STREET NAME SIGNAGE SHALL BE DESIGNED USING A WHITE MESSAGE ON A GREEN BACKGROUND WITH A 1 INCH WHITE BORDER. THE LEGEND, AND BORDER SHALL BE DIAMOND GRADE REFLECTIVE FILM. THE BACKGROUND SHALL BE ENGINEERED GRADE REFLECTIVE FILM.
11. INTERNAL ACCESS TO SIGN ASSEMBLY SHALL BE PROVIDED BY A SWING DOWN DOOR SIGN FACE.
12. INTERNALLY ILLUMINATED STREET NAME SIGN SHALL BE MANUFACTURED BY TRANSPORTATION CONTROL SYSTEMS, INC. OR APPROVED EQUIVALENT.



TYPICAL INTERNALLY ILLUMINATED STREET NAME SIGN DETAIL

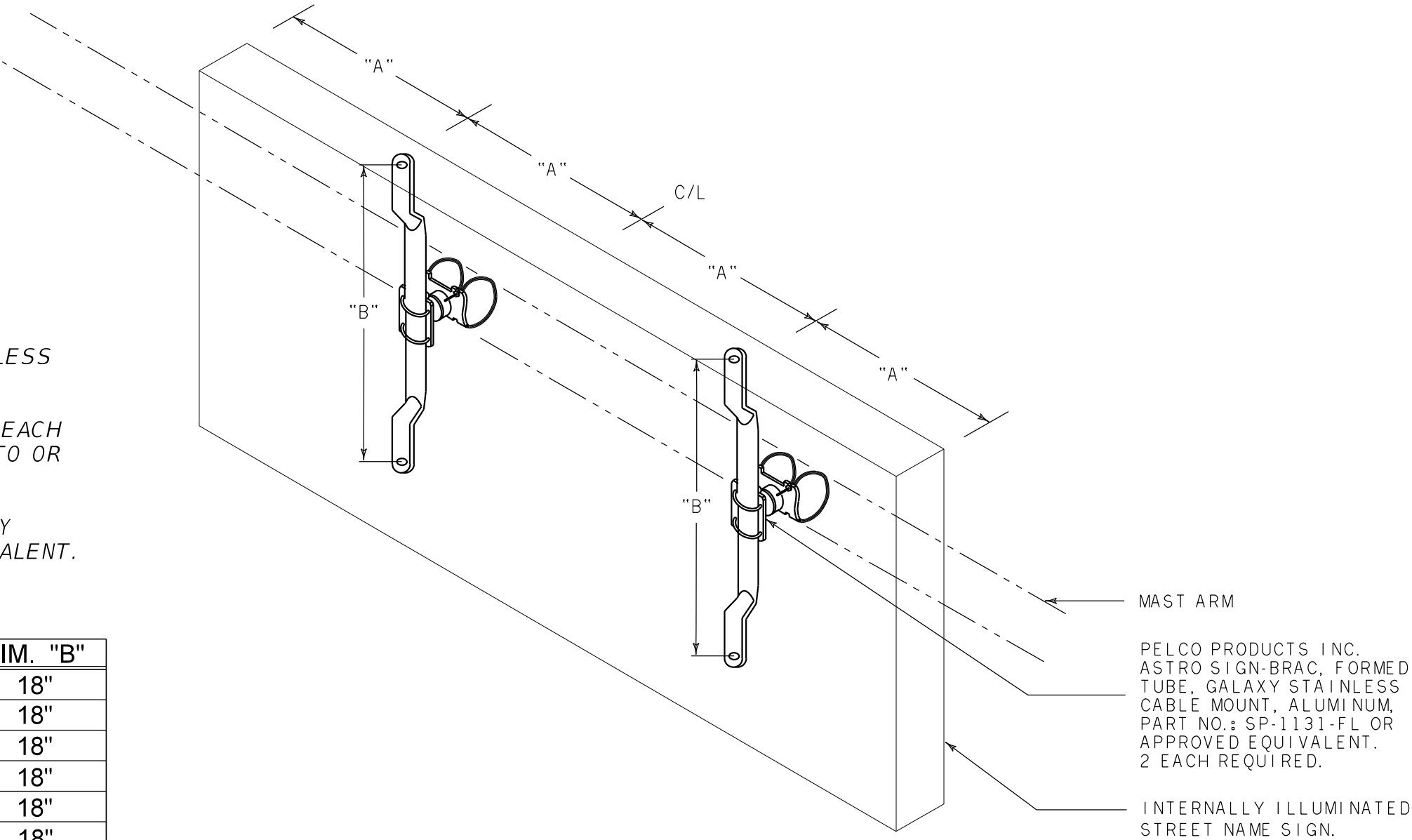
APPROVED INTERNALLY ILLUMINATED STREET NAME SIGN FACE DIMENSIONS	
SIGN SIZE	SQUARE FT.
24" X 48"	8.0
24" X 60"	10.0
24" X 72"	12.0
24" X 84"	14.0
24" X 96"	16.0
24" X 108"	18.0

<i>REVISIONS</i>						 <p>Collier County Traffic Operations 2885 South Horseshoe Drive Naples, Florida 34104</p> <p>Phone: (239) 252-8260 Fax: (239) 252-5868</p>	COLLIER COUNTY GROWTH MANAGEMENT DIVISION	ILLUMINATED STREET NAME SIGN DETAILS	<i>SHEET NO.</i>
<i>DATE</i>	<i>BY</i>	<i>DESCRIPTION</i>	<i>DATE</i>	<i>BY</i>	<i>DESCRIPTION</i>				<i>TSP-32</i>

CONSTRUCTION NOTES:

- 1. ALL MOUNTING HARDWARE SHALL BE STAINLESS STEEL.
- 2. TWO BRACKETS SHALL BE FURNISHED FOR EACH STREET NAME SIGN WITH A WIDTH EQUAL TO OR GREATER THAN 48 INCHES.
- 3. SIGN BRACKET SHALL BE MANUFACTURED BY PELCO PRODUCTS INC. OR APPROVED EQUIVALENT.

SIGN SIZE	SQUARE FT.	DIM. "A"	DIM. "B"
24" X 48"	8.0	12"	18"
24" X 60"	10.0	15"	18"
24" X 72"	12.0	18"	18"
24" X 84"	14.0	21"	18"
24" X 96"	16.0	24"	18"
24" X 108"	18.0	27"	18"



TYPICAL MAST ARM RIGID MOUNT
ILLUMINATED STREET NAME SIGN DETAIL

NOT TO SCALE

REVISIONS					
DATE	BY	DESCRIPTION	DATE	BY	DESCRIPTION



Collier County Traffic Operations
2885 South Horseshoe Drive
Naples, Florida 34104

Phone: (239) 252-8260
Fax: (239) 252-5868

COLLIER COUNTY
GROWTH MANAGEMENT DIVISION

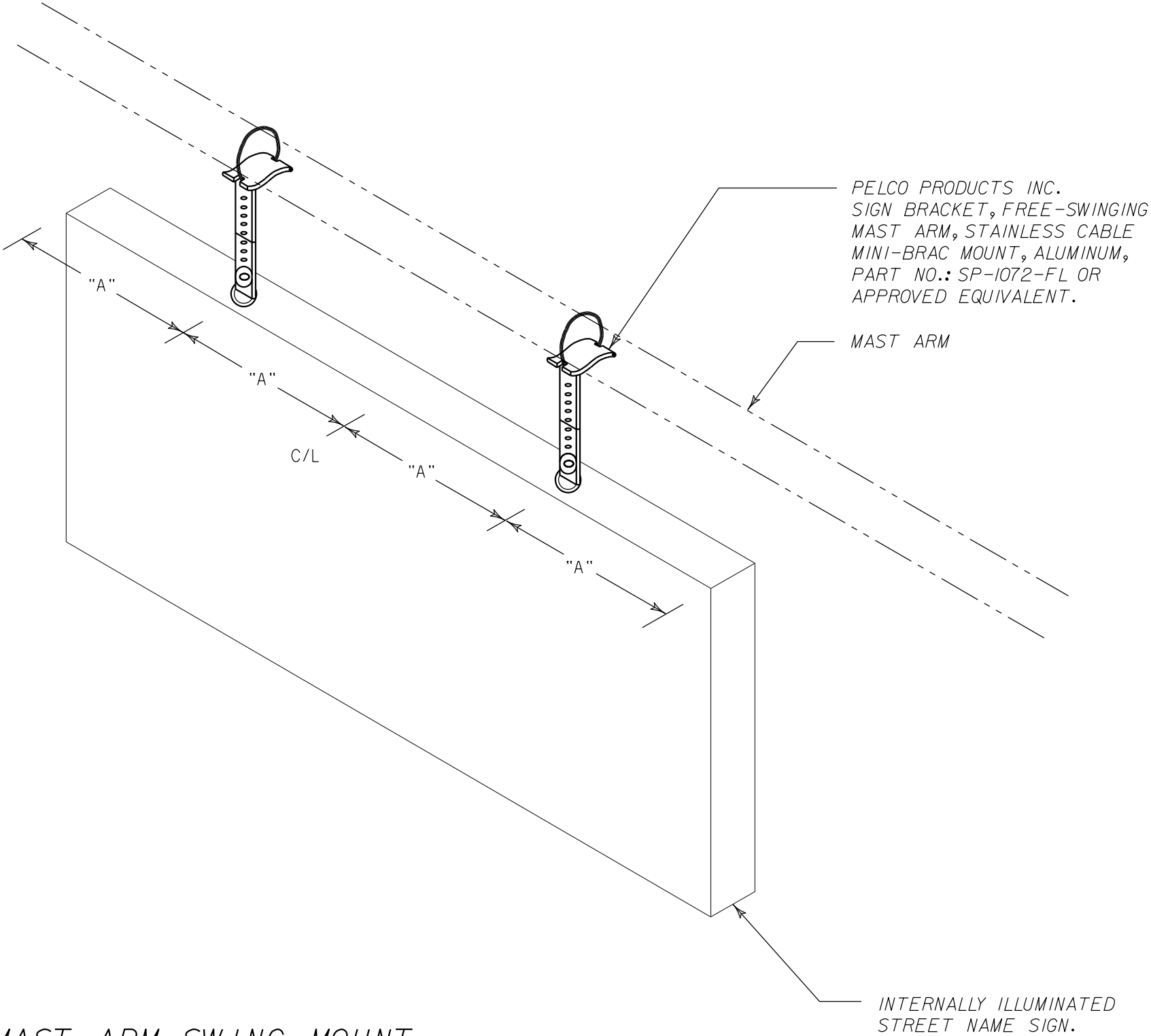
ILLUMINATED STREET NAME SIGN
MAST ARM DETAILS

SHEET
NO.
TSP-33

CONSTRUCTION NOTES:

- 1. ALL MOUNTING HARDWARE SHALL BE STAINLESS STEEL.
- 2. TWO BRACKETS SHALL BE FURNISHED FOR EACH STREET NAME SIGN WITH A WIDTH EQUAL TO OR GREATER THAN 48 INCHES.
- 3. SIGN BRACKET SHALL BE MANUFACTURED BY PELCO PRODUCTS INC. OR APPROVED EQUIVALENT.

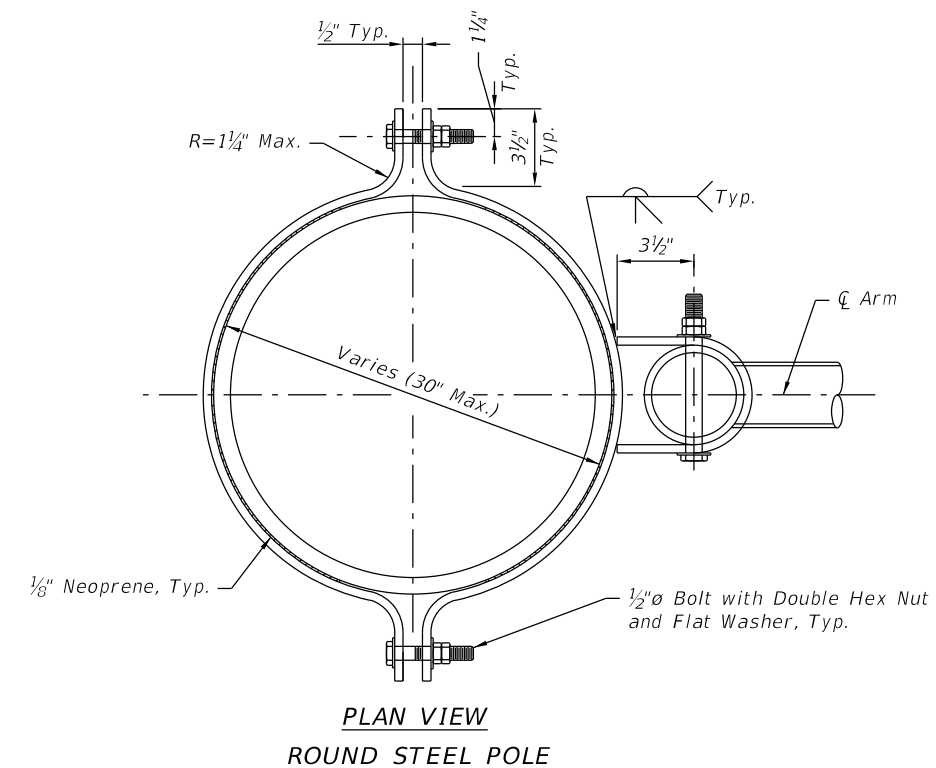
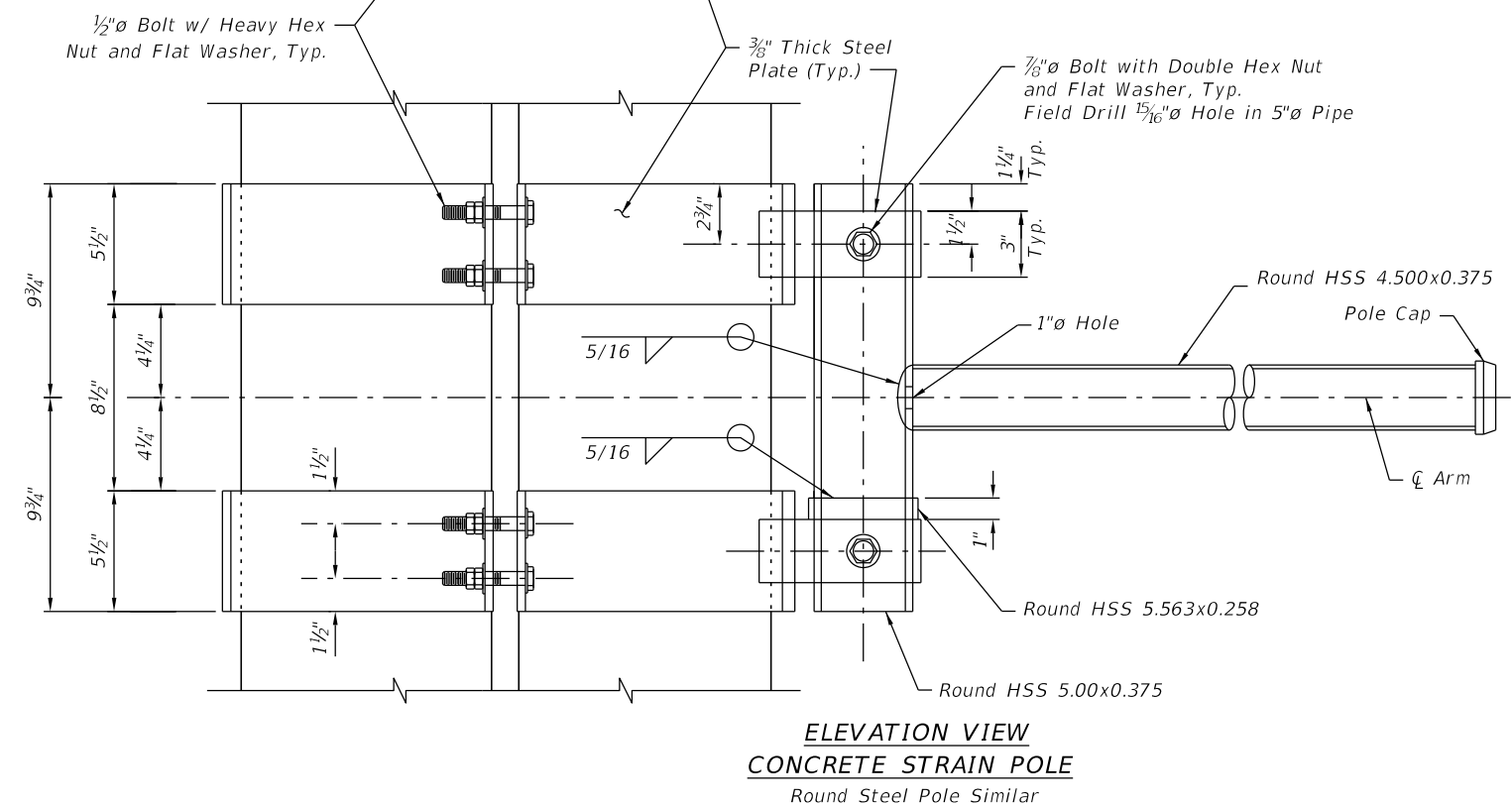
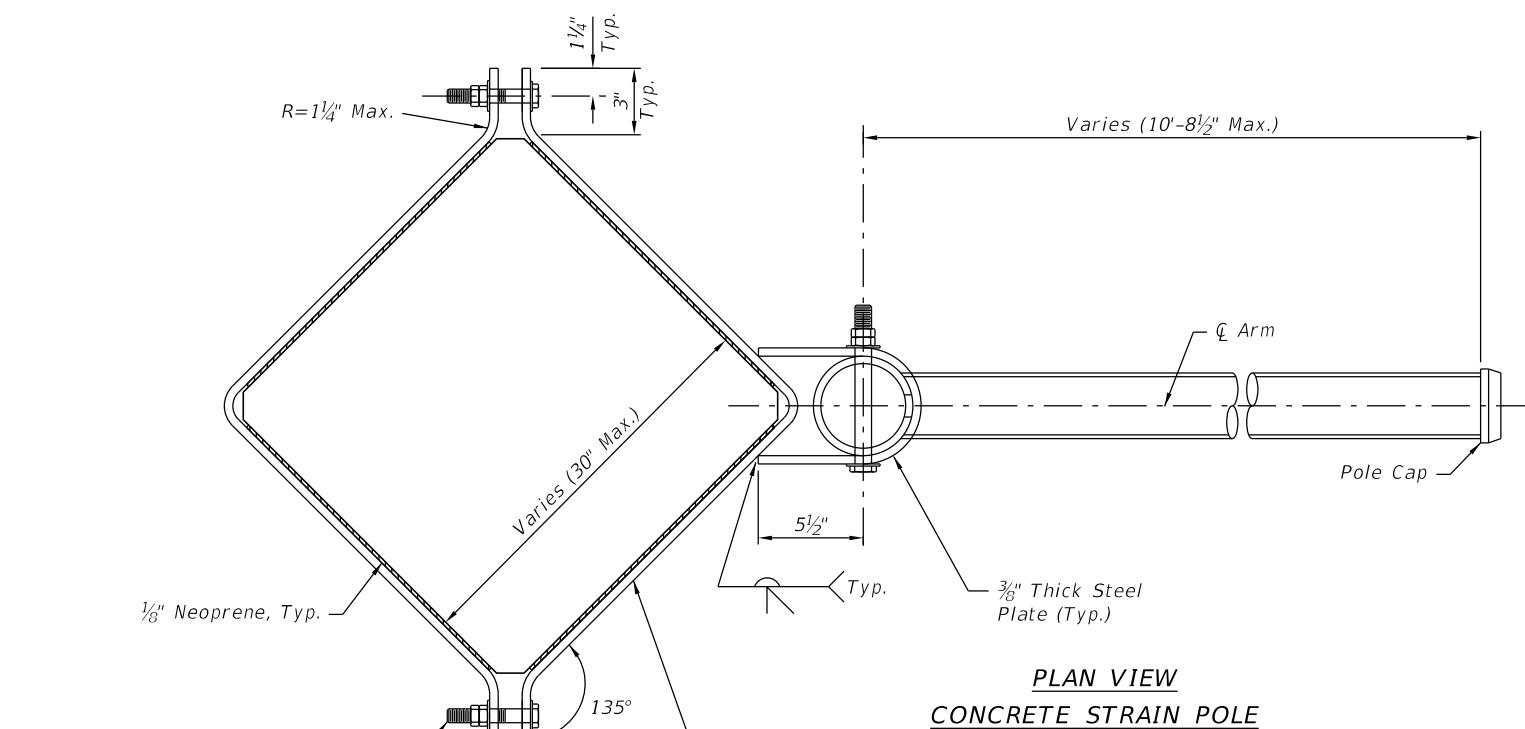
SIGN SIZE	SQUARE FT.	DIM. "A"
24" X 48"	8.0	12"
24" X 60"	10.0	15"
24" X 72"	12.0	18"
24" X 84"	14.0	21"
24" X 96"	16.0	24"
24" X 108"	18.0	27"



TYPICAL MAST ARM SWING MOUNT
ILLUMINATED STREET NAME SIGN DETAIL


NOT TO SCALE

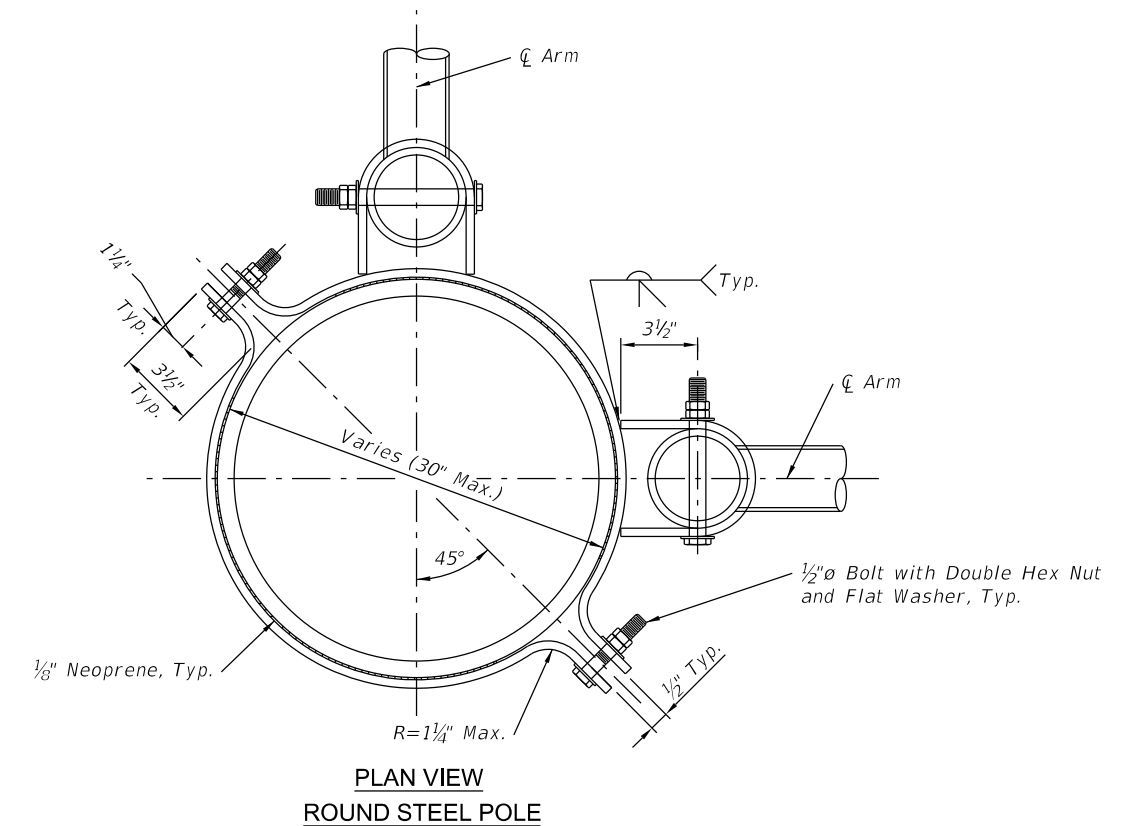
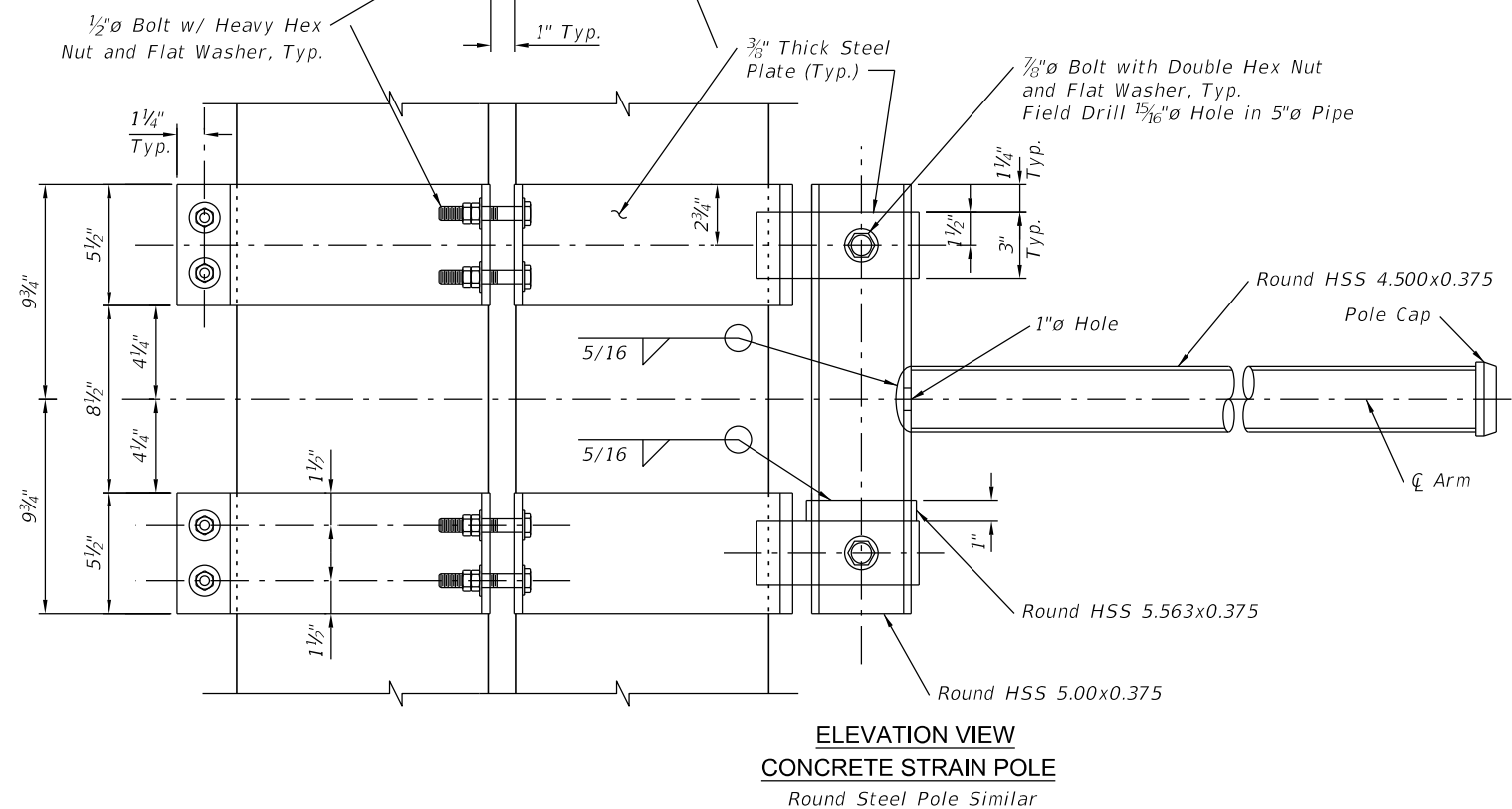
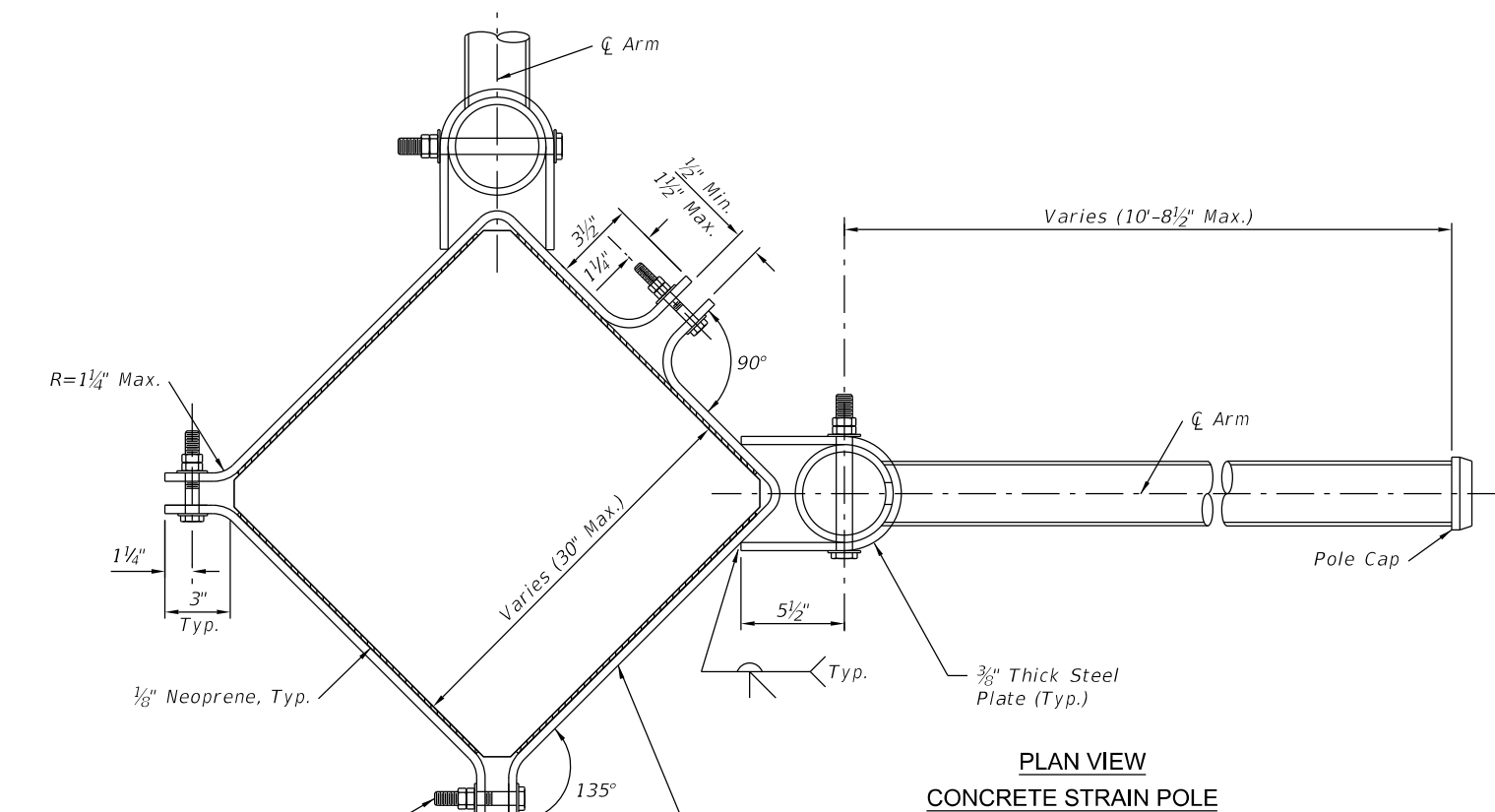
REVISIONS							Collier County Traffic Operations 2885 South Horseshoe Drive Naples, Florida 34104 Phone: (239) 252-8260 Fax: (239) 252-5868	COLLIER COUNTY GROWTH MANAGEMENT DIVISION	ILLUMINATED STREET NAME SIGN MAST ARM DETAILS	SHEET NO.	
DATE	BY	DESCRIPTION	DATE	BY	DESCRIPTION					TSP-34	



NOTES:

1. The Contractor shall verify the pole and dimensions required for installation of the Sign Bracket Arm and mounting angle before manufacturing Sign Bracket Arm.
2. Work this sheet with Sign Bracket Arm – Sign Panel Details sheet for additional installation details.
3. DESIGN WIND SPEED = 150 MPH
Design Loads from the center of the vertical pipe are as follows:
Horizontal Moment = 9329 FT LBS Vertical Moment = 2753 FT LBS
Horizontal Shear = 1696 LBS Vertical Shear = 319 LBS
4. The Contractor may propose an alternative Sign Bracket Arm design at no additional cost to the Collier County. The Contractor's alternative shall be designed in accordance with the latest edition of the FDOT Plans Preparation Manual and AASHTO Standard Specifications for Structural Supports for Highway Signs, Luminaries and Traffic Signals.
5. If an alternate design is proposed the Contractor shall submit design calculations and shop drawings signed and sealed by a Professional Engineer Registered in the State of Florida.
6. All Structural Steel except for Structural Tubing shall conform to ASTM A572 Grade 50. Structural Tubing shall conform to ASTM A53 Grade B. All bracket plates shall be hot bent.
7. All Bolts shall be High Strength A325 Bolts and shall receive Electrodeposited Coating in accordance with ASTM B633.
8. The Complete Sign Bracket Arm Assembly shall be hot-dipped Galvanized in accordance with ASTM A123.
9. WELDING: All Welding shall be in accordance with American Welding Society Structural Welding Code (Steel), ANSI/AWS D1.1 (current edition). Required weld material is E70XX. Nondestructive testing is not required.
10. Field Welding shall not be permitted.
11. Cantilever shall be painted the same color as the mast arm, monotube, or steel strain poles.
12. Cantilever shall be manufactured by Highway Systems, Inc. or approved equivalent.

<i>REVISIONS</i>						 <p>Collier County Traffic Operations 2885 South Horseshoe Drive Naples, Florida 34104</p> <p>Phone: (239) 252-8260 Fax: (239) 252-5868</p>	COLLIER COUNTY GROWTH MANAGEMENT DIVISION	ILLUMINATED STREET NAME SIGN CANTILEVER 1-WAY DETAILS	<i>SHEET NO.</i>
<i>DATE</i>	<i>BY</i>	<i>DESCRIPTION</i>	<i>DATE</i>	<i>BY</i>	<i>DESCRIPTION</i>				<i>TSP-35</i>



NOTES:

1. The Contractor shall verify the pole and dimensions required for installation of the Sign Bracket Arm and mounting angle before manufacturing Sign Bracket Arm.
2. Work this sheet with Sign Bracket Arm – Sign Panel Details sheet for additional installation details.
3. DESIGN WIND SPEED = 150 MPH
Design Loads from the center of the vertical pipe are as follows:
Horizontal Moment = 9329 FT LBS Vertical Moment = 2753 FT LBS
Horizontal Shear = 1696 LBS Vertical Shear = 319 LBS
4. The Contractor may propose an alternative Sign Bracket Arm design at no additional cost to the Collier County. The Contractor's alternative shall be designed in accordance with the latest edition of the FDOT Plans Preparation Manual and AASHTO Standard Specifications for Structural Supports for Highway Signs, Luminaries and Traffic Signals.
4. If an alternate design is proposed the Contractor shall submit design calculations and shop drawings signed and sealed by a Professional Engineer Registered in the State of Florida.
6. All Structural Steel except for Structural Tubing shall conform to ASTM A572 Grade 50. Structural Tubing shall conform to ASTM A53 Grade B. All bracket plates shall be hot bent.
7. All Bolts shall be High Strength A325 Bolts and shall receive Electrodeposited Coating in accordance with ASTM B633.
8. The Complete Sign Bracket Arm Assembly shall be hot-dipped Galvanized in accordance with ASTM A123.
9. WELDING: All Welding shall be in accordance with American Welding Society Structural Welding Code (Steel), ANSI/AWS D1.1 (current edition). Required weld material is E70XX. Nondestructive testing is not required.
10. Field Welding shall not be permitted.
11. Cantilever shall be painted the same color as the mast arm, monotube, or steel strain poles.
12. Cantilever shall be manufactured by Highway Systems, Inc. or approved equivalent.

R E V I S I O N S					
DATE	BY	DESCRIPTION	DATE	BY	DESCRIPTION



COLLIER COUNTY
GROWTH MANAGEMENT DIVISION

ILLUMINATED STREET NAME SIGN CANTILEVER 2-WAY DETAILS

SHEET
NO.

TSP-36

