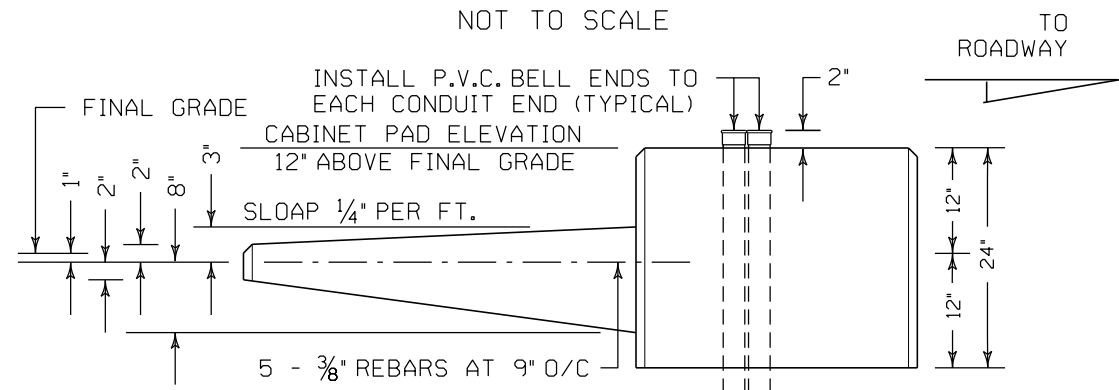


CONDUIT STUB OUTS

- A - 2" U.P.S. COMMUNICATIONS CONDUIT.
 B - 1 1/4" U.P.S. POWER CONDUIT.
 C - 3/4" GROUND WIRE.
 D - 1 1/4" POWER SERVICE.
 E - 3" VEHICLE SIGNAL CABLE.
 F - 3" PEDESTRIAN SIGNAL CABLE.
 G - 3" STREET LIGHTING AND/OR ILLUMINATED SIGNAGE.
 H - 3" PEDESTRIAN DETECTION.
 I - 3" VIDEO DETECTION AND/OR INDUCTIVE LOOP DETECTION, EMERGENCY VEHICLE DETECTION, AND ITS CCTV CAMERA CABLES.
 J - 2" COMMUNICATIONS.
- ALL CONDUITS SHALL BE SCHEDULE 40 P.V.C.

PLAN

NOT TO SCALE



SECTION

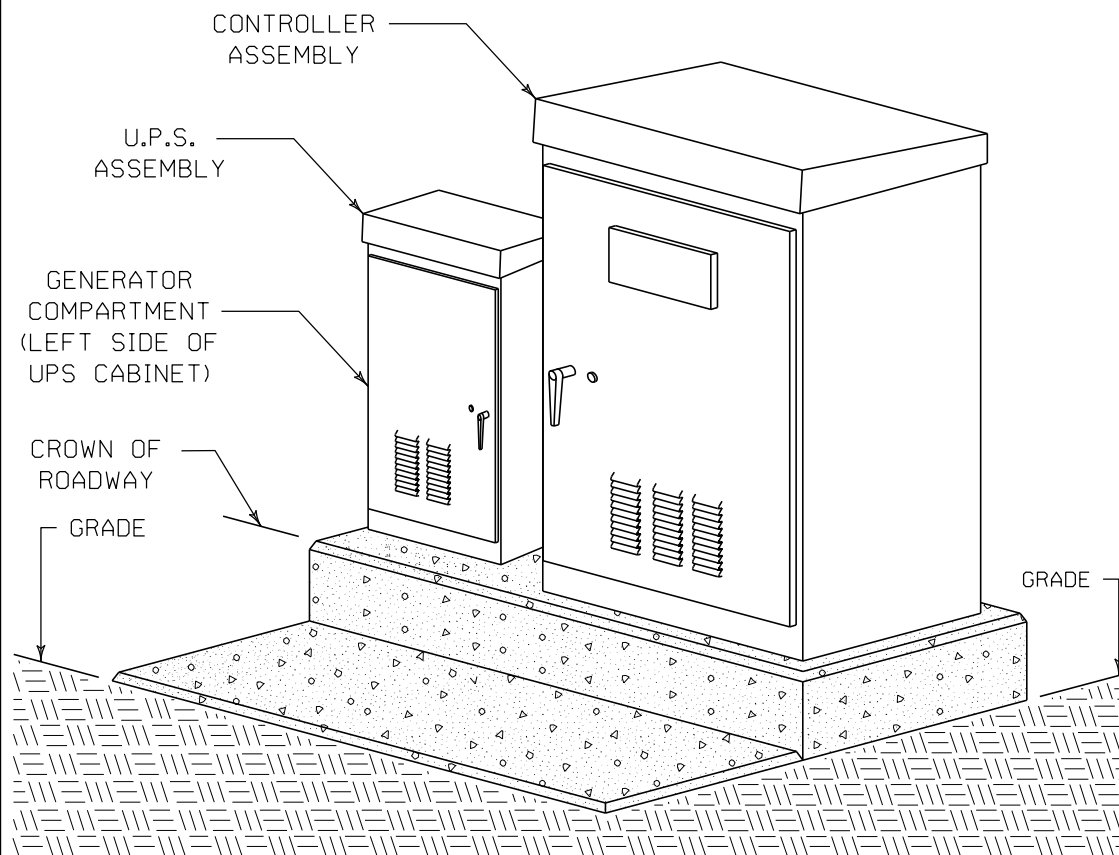
NOT TO SCALE

TRAFFIC CONTROLLER CABINET ASSEMBLY PAD DETAIL

NOT TO SCALE

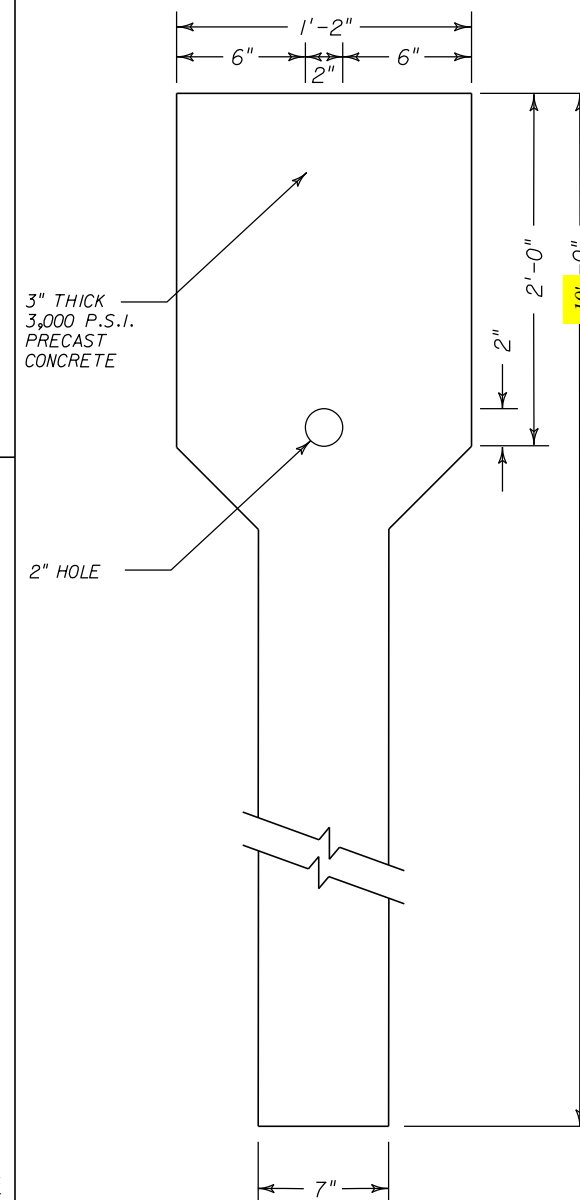
GENERAL NOTES

1. THE ENTIRE CONTROLLER ASSEMBLY CONCRETE FOUNDATION SHALL BE COMPACTED WITH A PLATE TAMPER, TO THE COUNTY'S APPROVAL, BEFORE THE CONCRETE IS POURED.
2. SURFACE OF CABINET PAD SHALL BE TROWEL FINISHED.
3. SURFACE OF WORK PAD SHALL BE BROOM FINISHED.
4. WORK PAD DIMENSIONS MAY CHANGE DUE TO FIELD CONDITIONS UPON AUTHORIZATION OF COLLIER COUNTY TRAFFIC OPERATIONS.
5. CONCRETE SHALL BE CLASS 1 (2,500 P.S.I.)
6. CHAMFER ALL EXPOSED EDGES 1".
7. CABINET PAD SHALL BE PLUMB AND LEVEL.
8. ELEVATIONS MAY BE CHANGED DUE TO FIELD CONDITIONS UPON AUTHORIZATION OF COLLIER COUNTY TRAFFIC OPERATIONS. CONSULT TRAFFIC OPERATIONS PRIOR TO PLACEMENT OF PAD.
9. THE CONTROLLER CABINET SHALL BE INSTALLED ON TOP OF SILICANT RUBBER CAULKING COMPOUND FOR WEATHER PROOFING OF THE CABINET.
10. NO. 6 AWG ELECTRICAL CONDUCTORS SHALL BE USED TO SUPPLY POWER FROM THE POWER SOURCE(S) TO THE CONTROLLER ASSEMBLY.
11. CABINET\WORK PAD SHALL BE POURED ON SITE. NO PREFORMED INSTALLATIONS SHALL BE ACCEPTED.
12. THE ELEVATION AT THE TOP OF THE CONTROLLER ASSEMBLY CONCRETE FOUNDATION SHALL BE EQUAL TO THE CROWN OF THE ROADWAY.
13. ALL CONDUIT TERMINATIONS SHALL HAVE BELL ENDS.



TYPICAL CONTROLLER AND U.P.S. ASSEMBLY INSTALLATION

NOT TO SCALE



TYPICAL POWER SERVICE PEDESTAL DETAIL

NOT TO SCALE

REVISIONS

DATE	BY	DESCRIPTION	DATE	BY	DESCRIPTION
7/28/23	CAO	Modified height of power service pedestal detail			



Collier County Traffic Operations
2885 South Horseshoe Drive
Naples, Florida 34104

Phone: (239) 252-8260
Fax: (239) 252-5868

COLLIER COUNTY
GROWTH MANAGEMENT DIVISION


CONTROLLER ASSEMBLY
DETAILS

SHEET
NO.

TSP-13



MALFUNCTION MANAGEMENT UNIT SHALL BE EBERLE DESIGN, INC. MODEL MMU2-16LE(ip) SMARTMONITOR OR APPROVED EQUIVALENT.

<i>REVISIONS</i>						 <p>Collier County Traffic Operations 2885 South Horseshoe Drive Naples, Florida 34104</p> <p>Phone: (239) 252-8260 Fax: (239) 252-5868</p>	COLLIER COUNTY GROWTH MANAGEMENT DIVISION	CONTROLLER ASSEMBLY DETAILS	SHEET NO.
DATE	BY	DESCRIPTION	DATE	BY	DESCRIPTION				TSP-14