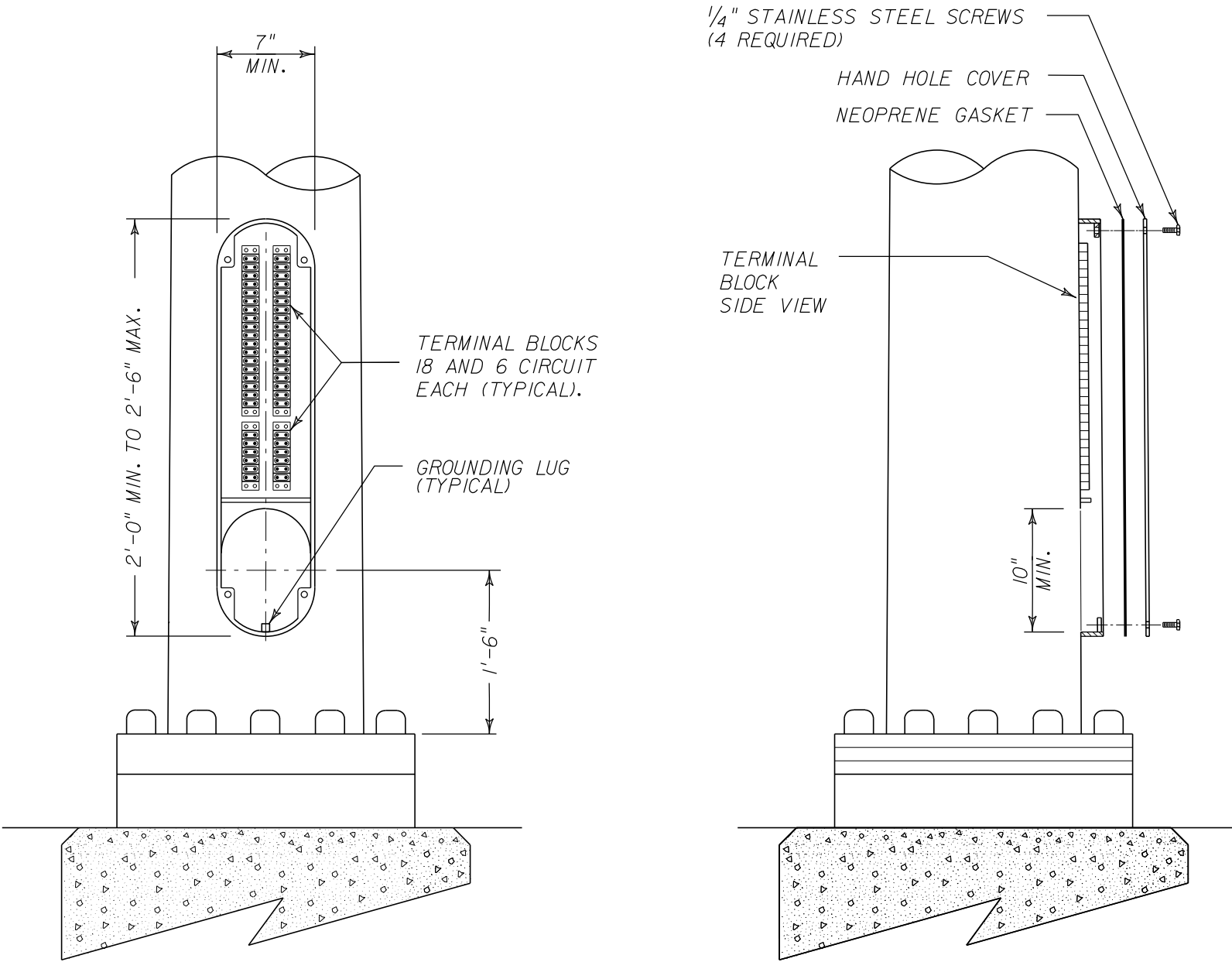


TOP VIEW

*SIGNAL HEAD BRACKET
ATTACHMENT DETAIL*

NOT TO SCALE



- NOTES:
- 1. TERMINAL COMPARTMENT, TERMINAL BLOCKS SHALL BE 6 AND 18 CIRCUIT, EACH RATED AT 30 AMPS, 600 VAC.
 - 2. INSTALL A MINIMUM OF ONE 6 CIRCUIT TERMINAL BLOCK AND ONE 18 CIRCUIT TERMINAL BLOCK. INSTALL ADDITIONAL, 6 AND/OR 18 CIRCUIT TERMINAL BLOCKS AS REQUIRED TO A MAXIMUM OF 4.

*TYPICAL HANDHOLE AND
TERMINAL COMPARTMENT DETAILS*

NOT TO SCALE

REVISIONS					
DATE	BY	DESCRIPTION	DATE	BY	DESCRIPTION



Collier County Traffic Operations
2885 South Horseshoe Drive
Naples, Florida 34104

Phone: (239) 252-8260
Fax: (239) 252-5868

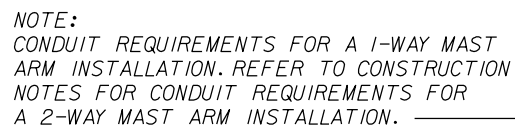
COLLIER COUNTY

GROWTH MANAGEMENT DIVISION

**MAST ARM
DETAILS**


SHEET
NO.

TSP-15



NOT TO SCALE

1. PULL BOX NUMBER 1 (TYPE "B") SHALL CONTAIN CABLES FOR VEHICLE SIGNAL INDICATIONS, PEDESTRIAN SIGNAL INDICATIONS, STREET LIGHTING, AND ILLUMINATED SIGNAGE, AS NEEDED.
2. PULL BOX NUMBER 2 (TYPE "B") SHALL CONTAIN CABLES FOR VEHICLE VIDEO DETECTION, EMERGENCY VEHICLE DETECTION, AND ITS CCTV CAMERA, AS NEEDED.
3. PULL BOX NUMBER 3 (TYPE "B") SHALL CONTAIN CABLES FOR PEDESTRIAN DETECTION AS NEEDED.
4. A 2-WAY MAST ARM INSTALLATION SHALL REQUIRE 1 ADDITIONAL 2" CONDUIT IN PULL BOX NUMBER 1.
3. GROUND WIRE SHALL BE #6 STRANDED.
4. ALL SEPERATELY GROUNDED ELEMENTS AT AN INTERSECTION SHALL BE BONDED TOGETHER TO FORM AN INTERSECTION GROUNDING NETWORK.
5. ALL CONDUIT TERMINATIONS SHALL HAVE BELL ENDS.

<i>REVISIONS</i>						 <p>Collier County Traffic Operations 2885 South Horseshoe Drive Naples, Florida 34104</p> <p>Phone: (239) 252-8260 Fax: (239) 252-5868</p>	COLLIER COUNTY GROWTH MANAGEMENT DIVISION	MAST ARM DETAILS	SHEET NO.
DATE	BY	DESCRIPTION	DATE	BY	DESCRIPTION				TSP-16

